

Privacy Settings

We use cookies to optimize our website and our service.

- ☒ Functional
- ☒ Statistics
- ☒ Marketing

Save

Functional only

Accept all

Powers That Be |
Insights on Artistic
Freedom from the 9th
World Summit on arts
and culture

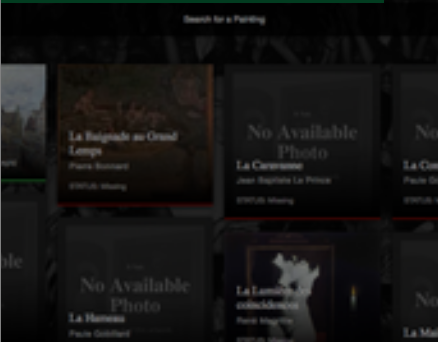


[FEATURES](#)

[INTERNATIONAL](#) [SWEDEN](#)

BY [LAI DEL ROSARIO](#)
19 AUG 2016

The art of archiving
lost things | From
Monet to Tracey Emin



[FEATURES](#)

[PHILIPPINES](#) [UNITED KINGDOM](#)

BY [LAI DEL ROSARIO](#)
20 AUG 2015

The ebbs and flows of
creative spaces in
Metro Manila



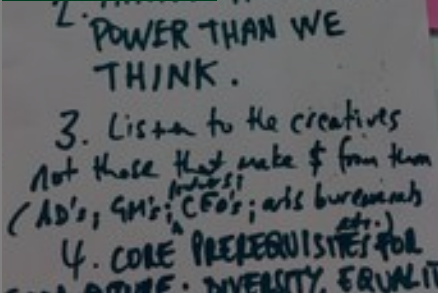
[FEATURES](#)

[PHILIPPINES](#)

BY [LAI DEL ROSARIO](#)
30 APR 2015

On selfies, sewers, and
art residencies | Q&A
with Boklong Anading

the capital | The quest
for inclusion in the
Philippines

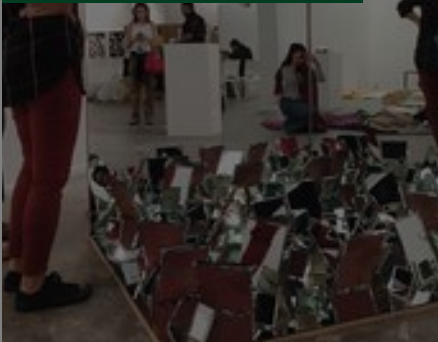


[INSIGHTS](#)

[ASIA](#) [PHILIPPINES](#)

BY [LAI DEL ROSARIO](#)
29 JUN 2016

Alternative spaces on
display | narratives from
Manila and Brisbane

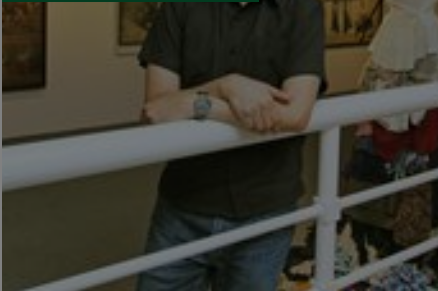


[FEATURES](#)

[AUSTRALIA](#) [PHILIPPINES](#)

BY [LAI DEL ROSARIO](#)
12 JUN 2015

On worldmaking, new
empires, and Philippine
art | One on one with
Patrick Flores



[FEATURES](#)

[INTERNATIONAL](#) [ITALY](#)
[PHILIPPINES](#)

BY [LAI DEL ROSARIO](#)
08 MAY 2013

French-Filipino
tandem introduces
Philippine

How digital innovation
is making it easier to
find the ideal creative
space



[FEATURES](#)

[AUSTRALIA](#) [GERMANY](#) [SINGAPORE](#)

BY [LAI DEL ROSARIO](#)
01 FEB 2017

A shared vision from
studio to stage | Opera
as collaboration



[FEATURES](#)

[PHILIPPINES](#)

BY [LAI DEL ROSARIO](#)
20 MAY 2015

Mirroring the artist at
Art Basel HK | A
conversation with
Gaston Damag



[FEATURES](#)

[FRANCE](#) [PHILIPPINES](#)

with Pokiong Anadang



[FEATURES](#)

[FRANCE](#) [PHILIPPINES](#)

Philippine contemporary art to France



[FEATURES](#)

[FRANCE](#) [PHILIPPINES](#)

[ABOUT ASEF CULTURE360](#)

[culture360.asef.org](#) brings Asia and Europe closer by providing information, facilitating dialogue and stimulating reflection on the arts and culture of the two regions.

[MORE ABOUT ASEF CULTURE360](#) | [FAQ](#)

