

## Privacy Settings

We use cookies to optimize our website and our service.

- ☒ Functional
- ☒ Statistics
- ☒ Marketing

Save

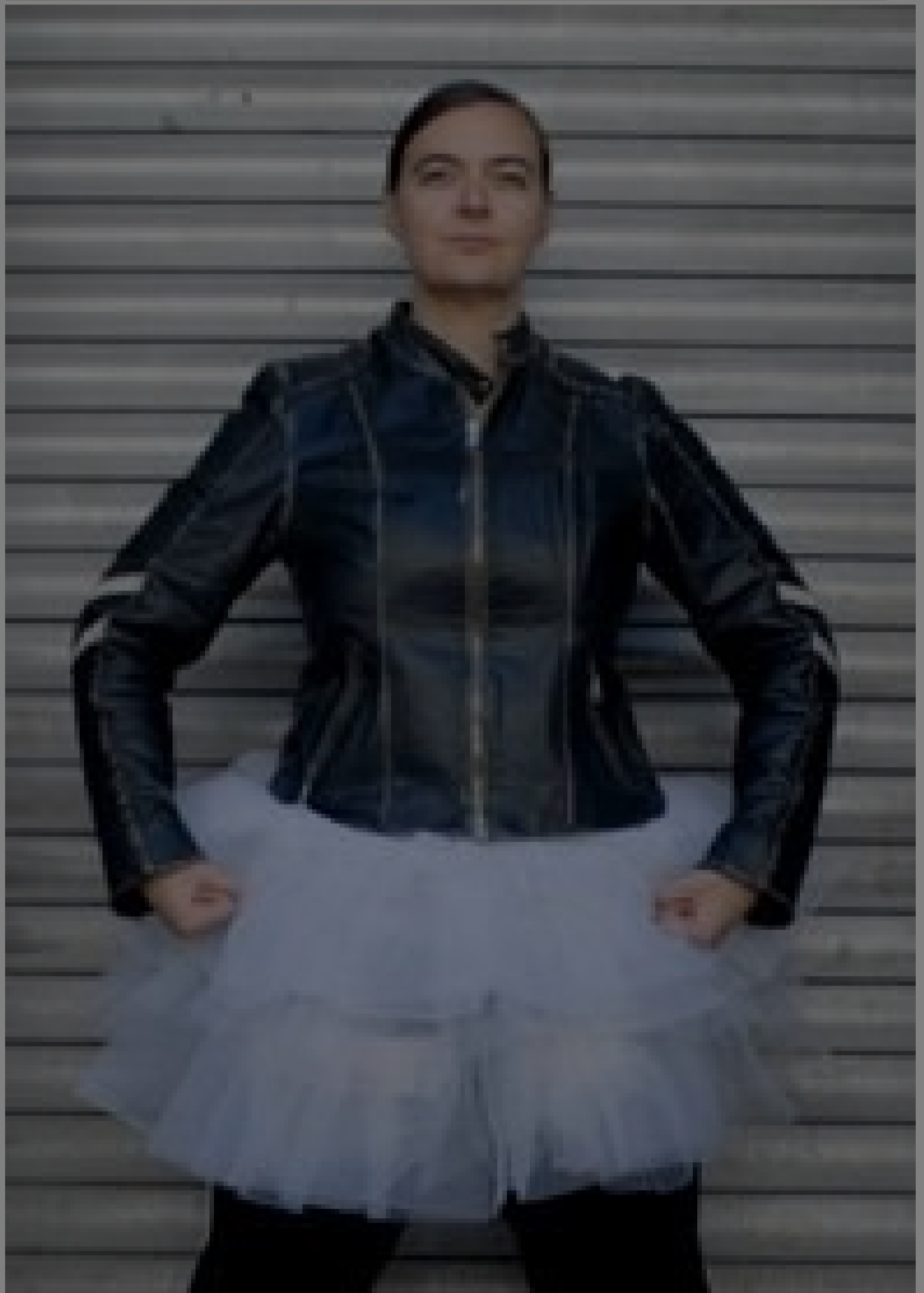
Functional only

Accept all

COUNTRIES  
[ASIA](#) [EUROPE](#) [GERMANY](#)  
[JAPAN](#) [MALAYSIA](#)

DISCIPLINE  
[DANCE](#)

It! - Female  
performing artists residency | Malaysia



*Work It!, one of the selected projects from the first edition of the [Creative Encounters – Cultural Partnerships between Asia and Europe](#), is a 10 days residency that is taking place in Kuala Lumpur (Malaysia) from 8 to 17 November.*

*Work It!* brings together 11 female performing artists from 11 countries of Asia and Europe for this 10-day residency with the aim of giving them the opportunity to interact with local artists' communities and cultural organisations.

The project addresses the gendered depiction of the body on stage in the context of contemporary dance through an Asian-European perspective. While exploring diverse perceptions on feminism, the artists raise questions about female performances on stage and how women can thrive in the global performing arts scene.

The *Work It!* project comprises of a week-long 'closed-door studio sessions' with all the participants at the Rimbun Dahan arts space near Kuala Lumpur, Malaysia. During these sessions, the artists share their artistic practice with each other. The project also includes a one-day open studio on 14 November as well as a **panel discussion on 17 November**. ASEF's Project Officer, Ms. Sasiwimon Wongjarin, will attend the final events on 17 November.

The residency is curated by Anna Wagner (Germany), Fumi Yokobori (Japan), and Bilqis Hijjas (Malaysia).

It is supported by the [Asia-Europe Foundation \(ASEF\)](#) as part of the programme [Creative Encounters: Cultural Partnerships between Asia and Europe](#) as well as by the Goethe-Institut Indonesia.

For more details about this project visit:

<http://www.rimbundahan.org/art/dance/projects/workit/index.html>

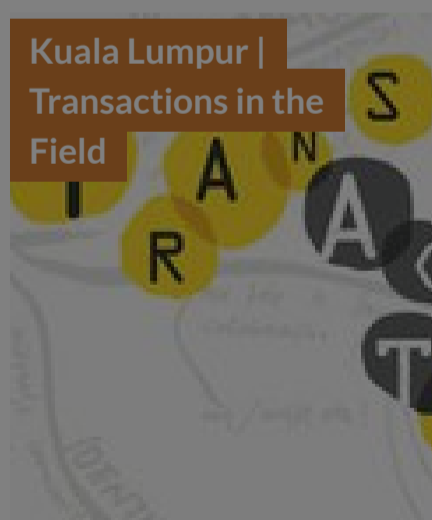
*The Creative Encounters programme supports collaborative bi-regional projects initiated by artists, cultural managers, arts organisations, and art networks. Through this initiative, ASEF has successfully fostered Asia-Europe partnerships and created opportunities for networking, cultural exchange, and co-operation between Asia and Europe.*

## Similar content

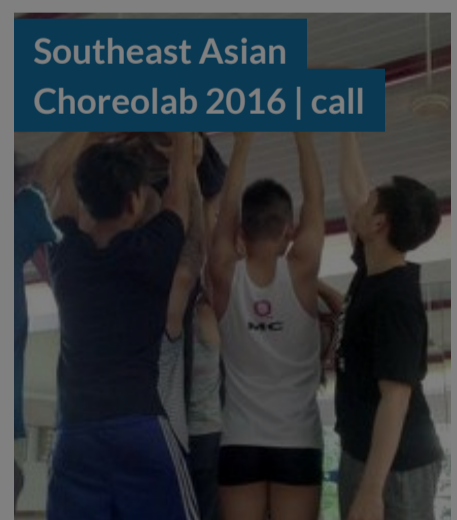
POSTED ON  
03 OCT 2017



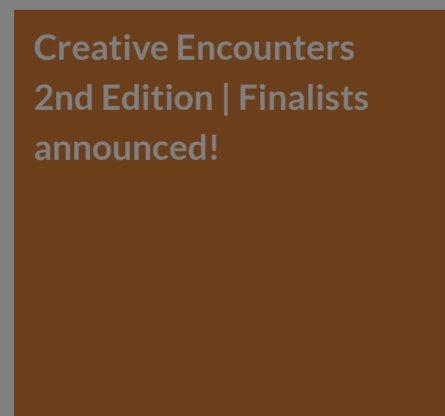
POSTED ON  
18 NOV 2015



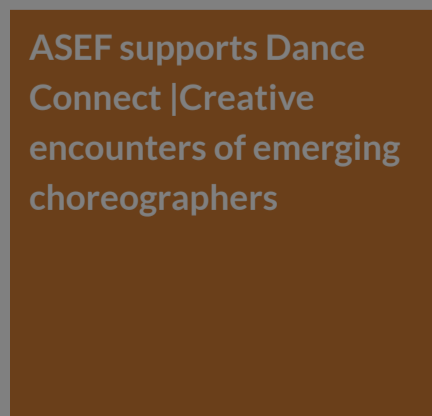
POSTED ON  
12 JAN 2016



POSTED ON  
21 NOV 2012

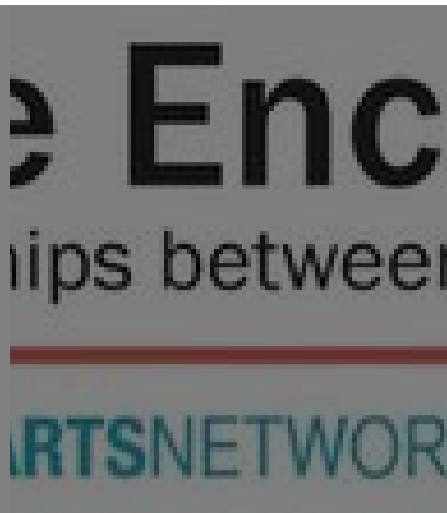


POSTED ON  
23 NOV 2015



POSTED ON  
26 JUN 2013





**ABOUT ASEF CULTURE360**

**culture360.asef.org** brings Asia and Europe closer by providing information, facilitating dialogue and stimulating reflection on the arts and culture of the two regions.

[MORE ABOUT ASEF CULTURE360](#) | [FAQ](#)

