

Privacy Settings

We use cookies to optimize our website and our service.

- ☒ Functional
- ☒ Statistics
- ☒ Marketing

Save

Functional only

Accept all

Creative Residency Network | Australia

WEBSITE
[HTTP://ASIALINK.UNIMELB.EDU.A...](http://asialink.unimelb.edu.au)

COUNTRIES
[ASIA](#) [AUSTRALIA](#) [EUROPE](#)

THEME
[CULTURAL POLICY](#)

meeting of
the Asia-Australia-Europe Creative
Residency Network | Australia



res artis

Asia- Australia- Europe
Creative Residency Network

[caption id="attachment_41929" align="aligncenter"

width="620"]



Participants

and speakers of the Inaugural Meeting of the Asia-Australia-Europe Creative Residency Network[/caption] The inaugural meeting of the **Asia-Australia-Europe Creative Residency Network** is supported by the Asia-Europe Foundation (ASEF) as one of the 3 projects selected this year through [ASEF Creative Networks programme](#). The event began on 9 May with a meeting on **"Mapping and Assessment"** that will continue the development of Res Artis' assessment protocols for the art sector.

What is already known of mapping residencies, and by whom in Australia, Asia and Europe? What is the best way of mapping arts residencies and the value? The discussions will look at cultural factors in Asia, Europe and Australia to consider in evaluating the success of an arts residency programme.

The second meeting organised by the European network [On-The-Move](#) and [Res Artis](#) took place on 12 May. Funders and stakeholders from Europe, Asia and Australia were invited to brainstorm on the issue of ***access and reciprocity in relation to cultural mobility***. Funding models for mobility today face a lot of challenges - old and new. Some funding bodies connect diverse regions of the world, while others have a regional focus. Despite the current models - access to local, national and international stakeholders and culturally sensitive expertise is crucial. This brainstorming meeting between key mobility funders and stakeholders addressed questions such as **what issues do funding bodies face when supporting mobility and how new partnerships are required to adapt current funding models to address established needs**. This meeting is also a continuation of the discussions started in 2013 in Prague with the meeting of over [50 Asian and European cultural mobility funders](#) and other stakeholders (co-organised with the support of the Asia-Europe Creative Encounters programme). ASEF's project manager Valentina Riccardi participated in the sessions and presented ASEF's role as a funder of cultural mobility namely through the Asia-Europe Creative Encounters and ASEF Creative Networks programmes. She also announced the upcoming 3rd Edition of the [Funding opportunities for international cultural exchange in Asia](#) to be published in August on culture360.asef.org.
[Overview Asia Australia Europe mobility program May 2014 FNL](#) For more information:
<https://culture360.asef.org/asef-news/asef-to-support-several-initiatives-through-creative-encounters-and-asef-creative-networks/>
<http://www.asef.org/index.php/projects/themes/culture/3214-culture360-supports-the-meeting-on-access-and-reciprocity-in-cultural-mobility> <http://on-the-move.org/news/article/16213/access-and-reciprocity-a-brainstorming-meeting/>

Similar content

POSTED ON
29 DEC 2014

Mobility Funding
Guides for 49 countries
of Asia and Europe
launched!

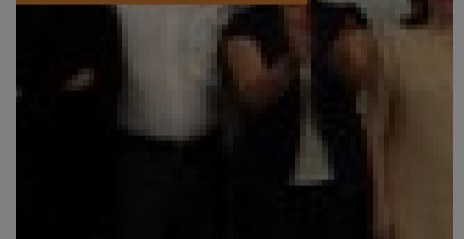
POSTED ON
27 MAR 2018

Cultural Mobility in
Asia & Europe



POSTED ON
19 MAR 2015

ASEF supports the
launch of SEAAA
Mobility Platform
between Asia and
Europe | Greece



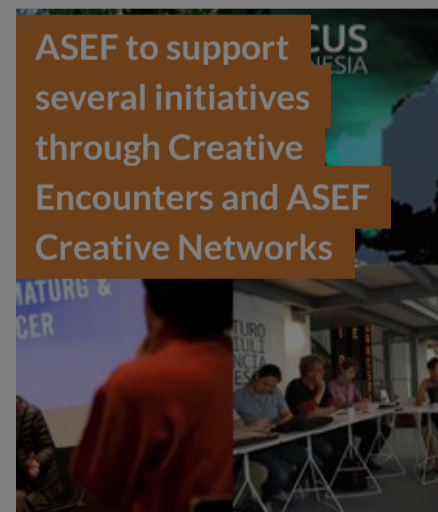
POSTED ON
11 MAY 2015

SEAAA Mobility
Platform in Athens |
Report



POSTED ON
10 JAN 2014

ASEF to support
several initiatives
through Creative
Encounters and ASEF
Creative Networks



POSTED ON
01 SEP 2021

Resartis General
Conference 2021 |
Defining the new
decade



ABOUT ASEF CULTURE360

culture360.asef.org brings Asia and Europe closer by providing information, facilitating dialogue and stimulating reflection on the arts and culture of the two regions.

[MORE ABOUT ASEF CULTURE360 | FAQ](#)

