

## Privacy Settings

We use cookies to optimize our website and our service.

- ☒ Functional
- ☒ Statistics
- ☒ Marketing

Save

Functional only

Accept all

COUNTRIES  
[MALAYSIA](#) [PORTUGAL](#)

DISCIPLINE  
[DANCE](#)

forum  
creates connections

# ASIA-EUROPE FOUNDATION

As part of the 6th Pointe to Point Dance Forum, after the meeting, all participants are invited to present proposals for ongoing work. Some embryonic projects developed during the Lisbon Pointe to Point can be further developed during residencies in Asia and/or Europe, if considered of quality, relevance to the field of dance movement research and collaboration. A network of international partners will be set up to host these residencies. ASEF and Alcantara have identified Asian and European partners that are interested in hosting these artists. To nurture these connections generally speaking ASEF provides mobility fund (international transport) and facilitates in the realization of the FOLLOW UP RESIDENCY PROJECTS.

The aim is

- To facilitate the future development of dance movement research and collaboration
- To deepen the networking and exchanging amongst its previous Asia-Europe Dance Forum participants
- To assist promising alumni artists in realizing their collaborative artistic project

Through the past Pointe to Point projects, connections have been established between artists. To nurture those connections ASEF has decided to provide funding to Pointe to Point alumni artists for specific follow up projects; as a result “Diary of Alice” is one of them.

“The Diary of Alice” aims to explore collaboration as a way of approaching arts in highly interactive and globalised environment. Developing from individual projects, though with different approach and product, both artists found their commonality of their work, share a common interest and curiosity in questioning and instigating the word, ‘identity’. By creating a central fictitious character, Alice, the artists create an open canvas to scribble one’s imagination, desire and aspiration. By writing about how Alice’s life can be lived and evolved, the artists further instigate the construction and validity of an identity in a global context. The residency will be in 2 phases. The first phase will be in Rimbun Dahun, Kuala Lumpur, Malaysia and the second phase in arts residency in Europe, to be confirmed by partner in January. During the residency the artists will engage artists and audience as an active and participative element in art work. The artists begin the work process by writing a life story of Alice on Alice’s blog <http://www.alicelisbon.blogspot.com>

The collaborating ASEF alumni – namely **Joavien Ng** (Singapore) and **Paloma Calle** (Spain) commit to engage in a joint artistic project called “Diary of Alice” taking place at

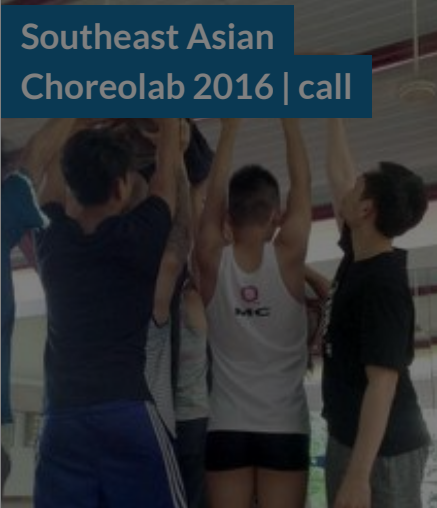
**Rimbun Dahan, Kuala Lumpur, Malaysia during 15th February - 17th March 2010**  
**and**  
**Forum Dança, Lisboa, Portugal during 16th - 30th April 2010**

Source: [http://asef.org/index.php?option=com\\_project&task=view&id=615](http://asef.org/index.php?option=com_project&task=view&id=615)

Similar content


POSTED ON  
12 JAN 2016

Southeast Asian  
Choreolab 2016 | call



POSTED ON  
03 OCT 2017

Southeast Asian  
Choreolab 2018 | call  
for applications



POSTED ON  
21 AUG 2017

Rimbun Dahan  
Southeast Asian Arts  
Residencies call

Rimbun Dahan  
Southeast Asian  
Artist Residencies  
2018

Deadline: Friday, 15 September 2017  
\* Open for Southeast Asian artists only  
For more information visit [bit.ly/rdsea2018](http://bit.ly/rdsea2018)

POSTED ON  
14 NOV 2012

Creative Encounters |

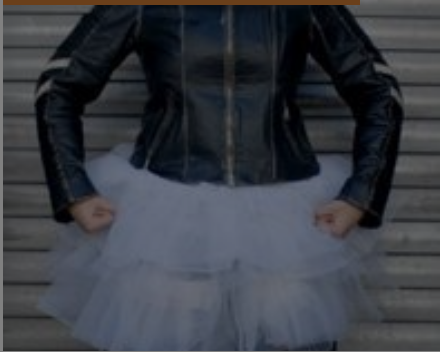
POSTED ON  
17 OCT 2018

Southeast Asian

POSTED ON  
08 OCT 2009

Reflections on the

Work It! - Female  
performing artists  
residency | Malaysia



Choreolab -  
applications invited



Asia-Europe Dance  
Forum



## **ABOUT ASEF CULTURE360**

**culture360.asef.org** brings Asia and Europe closer by providing information, facilitating dialogue and stimulating reflection on the arts and culture of the two regions.

[MORE ABOUT ASEF CULTURE360](#) | [FAQ](#)

