

## Privacy Settings

We use cookies to optimize our website and our service.

- ☒ Functional
- ☒ Statistics
- ☒ Marketing

Save

Functional only

Accept all

WEBSITE

[HTTPS://WWW.SELVEDGE.ORG/COLL...](https://www.selvedge.org/collections/world-fair)

COUNTRIES

[ASIA](#) [EUROPE](#)

THEMES

[COVID-19](#) [CREATIVE INDUSTRIES](#)

[CULTURAL RIGHTS](#)

[CULTURE AND DEVELOPMENT](#)

[ECONOMY AND SOCIETY](#)

[PROFESSIONAL DEVELOPMENT](#)

DISCIPLINE

[CRAFT](#)

## Celebrating textiles & crafts

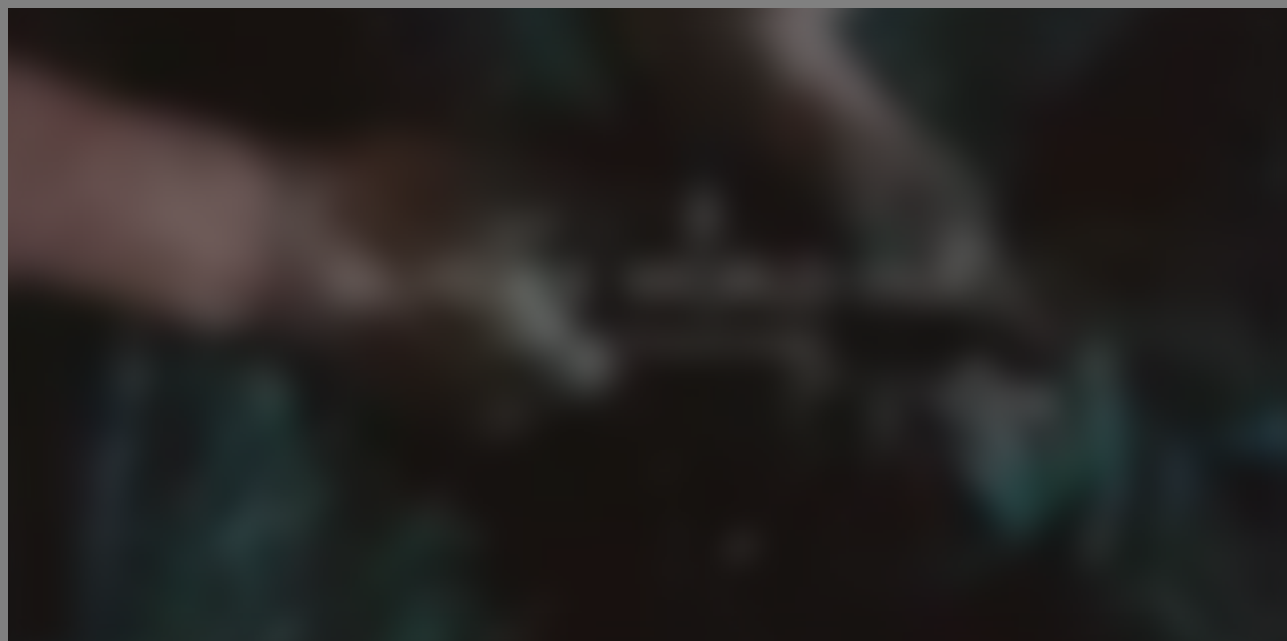


SELVEDGE WORLD FAIR: CELEBRATION OF CLOTH, CULTURE & CREATIVITY

The Selvedge World Fair is a 3-day virtual event, a celebration of **cloth, culture and creativity**, that will present the work of master artisans, bringing together varied - and in some cases endangered - **textile traditions** from around the world. Visitors will be able to buy handmade treasures, take part in online workshops and watch and participate in talks on textile-related themes. Expect indigo dyers from Japan, baskets makers from Swaziland, and rug weavers from Uzbekistan and many more.

Tickets give you access to Selvedge World Fair Friday 4th & Saturday 5th September including **talks, show & tell sessions, shopping, demonstrations, articles and interviews as well as a quiz with prizes.**

For more details: <https://www.selvedge.org/collections/world-fair>



# Similar content

POSTED ON  
12 JUL 2017

Sweden | European  
Textile Network  
conference



POSTED ON  
21 NOV 2012

TEDx Ubud



POSTED ON  
22 MAR 2017

IKAT / eCUT  
programme 2017



POSTED ON  
17 MAY 2021

Slovenia | BIEN 2021 -  
international textile art  
biennial



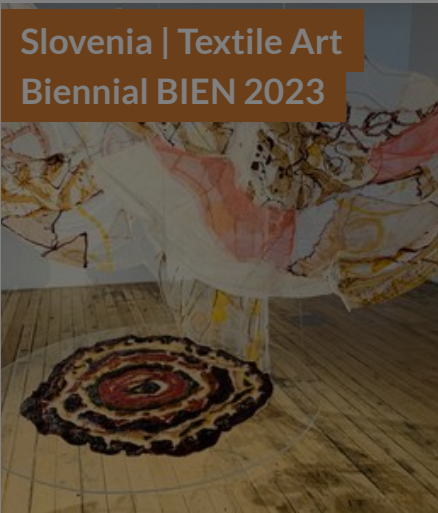
POSTED ON  
20 OCT 2023

culture360 Media  
Partnership | Art  
Jakarta



POSTED ON  
26 MAY 2023

Slovenia | Textile Art  
Biennial BIEN 2023



## ABOUT ASEF CULTURE360

[culture360.asef.org](http://culture360.asef.org) brings Asia and Europe closer by providing information, facilitating dialogue and stimulating reflection on the arts and culture of the two regions.

[MORE ABOUT ASEF CULTURE360 | FAQ](#)

