

## Privacy Settings

We use cookies to optimize our website and our service.

- ☒ Functional
- ☒ Statistics
- ☒ Marketing

Save

Functional only

Accept all

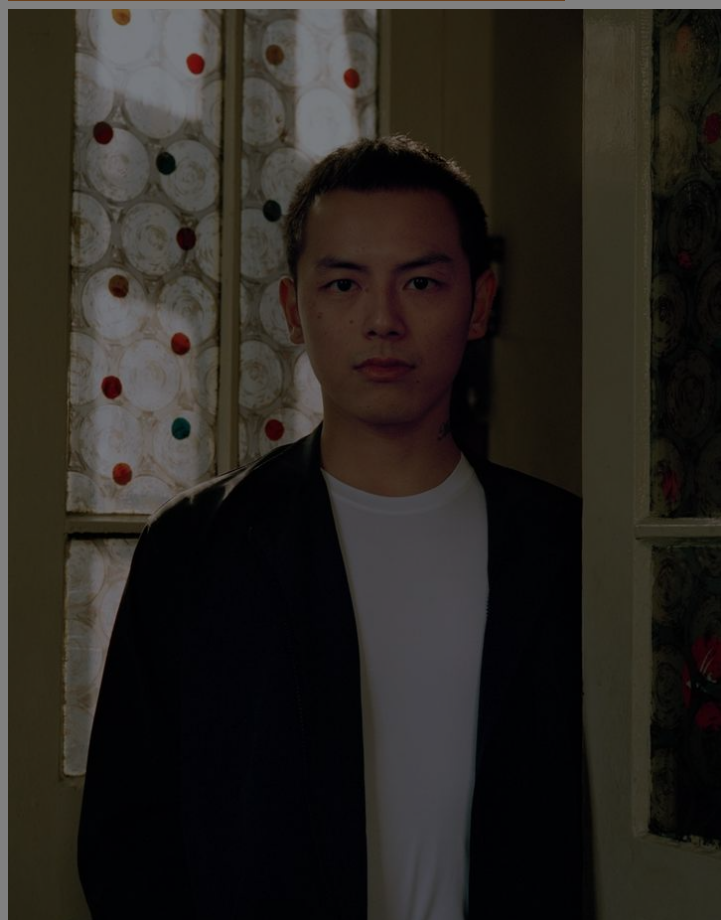
WEBSITE  
[HTTPS://WWW.TATE.ORG.UK/PRESS...](https://www.tate.org.uk/press...)

COUNTRIES  
[ASIA](#) [UNITED KINGDOM](#)

THEMES  
[CULTURAL MANAGEMENT](#)  
[MUSEUMS](#)

DISCIPLINE  
[VISUAL ARTS](#)

# Foundation partnership for curators of Asia-Pacific art



Tate Modern has announced the appointment of two curators specialising in art from the Asia-Pacific region. Alvin Li has been appointed to the role of Curator, International Art, supported by Asymmetry Art Foundation, and that Hera Chan has been appointed Adjunct Curator, Asia-Pacific, supported by Asymmetry Art Foundation.

Both of these roles **ensure that expertise on art from the Asia-Pacific region is embedded in Tate Modern's curatorial team**, devising and delivering ambitious exhibitions, displays and initiatives in the gallery. They will also research new strategic acquisitions of modern and contemporary art for Tate's collection, and **forge new relationships with artists, cultural producers, scholars and curators based in the region.**

These posts are supported through a new partnership between Tate and Asymmetry Art Foundation. Asymmetry is a London-based not-for-profit organisation dedicated to **nurturing the next generation of curators and to developing curatorial practice and expertise in Asia and beyond.** By working in partnership with key art institutions – including The Courtauld Institute of Art, Goldsmiths University of London, Chisenhale Gallery and Delfina Foundation – Asymmetry supports a wide range of curatorial placements and scholarship programmes.

Yan Du and Michèle Ruoyi Landolt, Directors at Asymmetry Art Foundation, said “Our varied approach in building partnerships have resulted in numerous initiatives, while giving presence to Sinophone artistic voices from Asia and its diaspora. We acknowledge the **importance of contextualising curatorial knowledge about the distinctive regions of the Asia-Pacific in the**

global art world and we are excited to further shape the future of curatorial, art-historical, and institutional practices in a more inclusive and diverse landscape through this invaluable partnership with Tate.”


[Read more about the initiative on Tate Modern website.](#)

*Image: Left: Alvin Li, photo by Shuwei Liu. Right: Hera Chan*

## Similar content

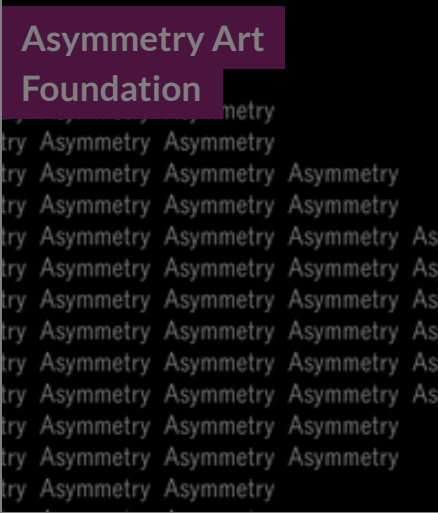
POSTED ON  
15 JUN 2016

Brooks International Fellowship Programme 2017



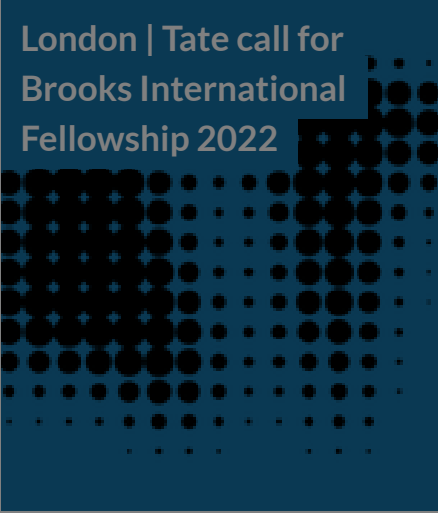
POSTED ON  
14 FEB 2024

Asymmetry Art Foundation



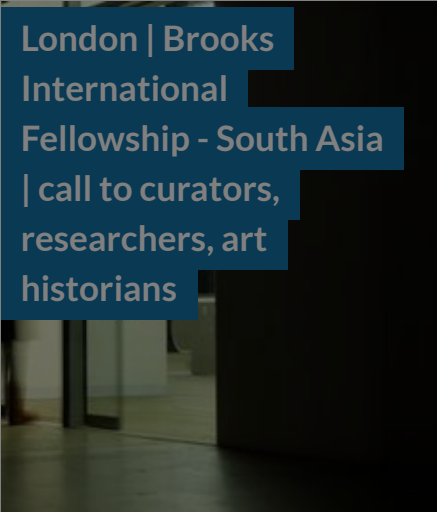
POSTED ON  
21 DEC 2021

London | Tate call for Brooks International Fellowship 2022



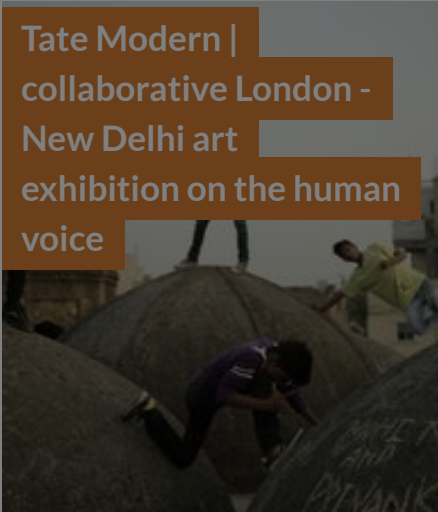
POSTED ON  
24 FEB 2014

London | Brooks International Fellowship - South Asia | call to curators, researchers, art historians



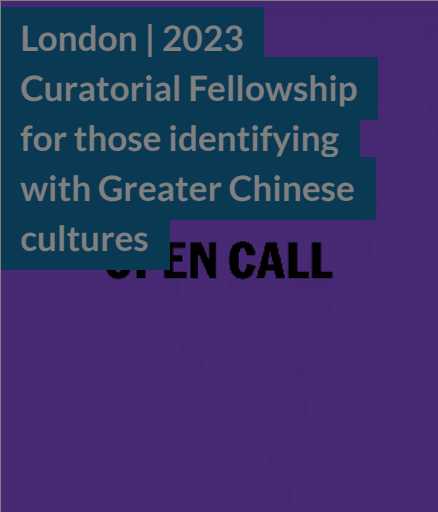
POSTED ON  
06 SEP 2013

Tate Modern | collaborative London - New Delhi art exhibition on the human voice



POSTED ON  
01 NOV 2022

London | 2023 Curatorial Fellowship for those identifying with Greater Chinese cultures



### [ABOUT ASEF CULTURE360](#)

[culture360.asef.org](#) brings Asia and Europe closer by providing information, facilitating dialogue and stimulating reflection on the arts and culture of the two regions.

[MORE ABOUT ASEF CULTURE360](#) | [FAQ](#)

