

Privacy Settings

We use cookies to optimize our website and our service.

- ☒ Functional
- ☒ Statistics
- ☒ Marketing

Save

Functional only

Accept all

COUNTRIES

[GERMANY](#) [INTERNATIONAL](#)

THEMES

[CREATIVE INDUSTRIES](#)
[CULTURAL MANAGEMENT](#)
[CULTURAL POLICY](#)

DISCIPLINES

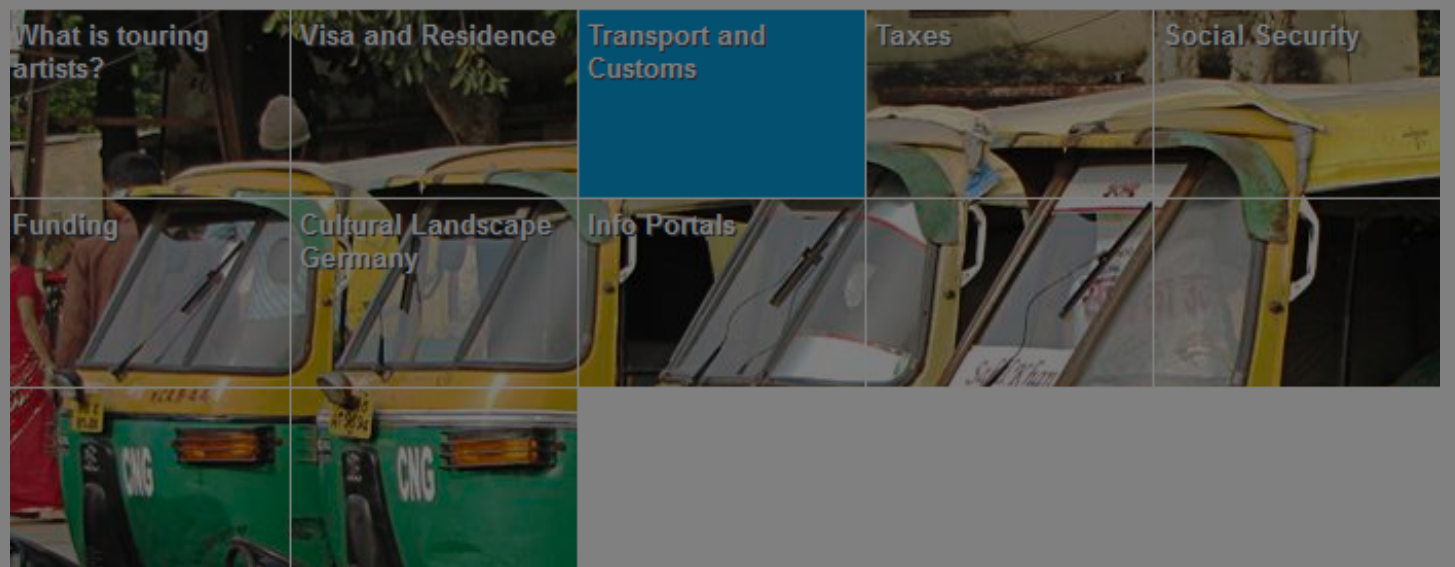
[PERFORMING ARTS](#) [VISUAL ARTS](#)

launched in Germany



[HOME](#) [LIBRARY](#) [GLOSSARY](#) [FUNDING DATABASE](#)
[SEARCH](#) [FEEDBACK](#) [PRINT](#)

TOURING ARTISTS > [TRANSPORT AND CUSTOMS](#)



[touring artists](#), an information portal for internationally mobile artists, has been launched in Germany. It provides comprehensive information on visas/residence, transport/customs, taxes, social security, other insurances, and copyright for both outgoing and incoming artists.

Through a joint project of the German Centre of the [International Theatre Institute](#) (ITI) and the [Internationale Gesellschaft der Bildenden Künste](#) (IGBK; English: International Association of Art (IAA) in Germany), these topics have been examined for both the performing arts and the visual arts.

touring artists primarily maps the circumstances, legal regulations, and administrative procedures in Germany – for foreign artists who work here temporarily and for German artists or artists who live in Germany and who work abroad for a limited time. It also considers the perspective of Germany-based organisers.

The website is available in English and German.

Similar content

POSTED ON
14 JUL 2015

ifa Artists' Contacts
grants programme

POSTED ON
18 JUL 2018

ifa Artists' Contact
programme call

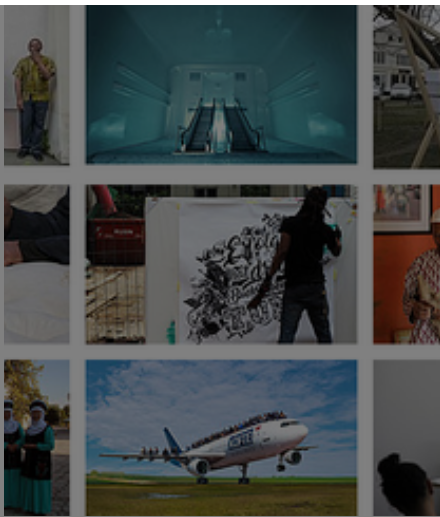
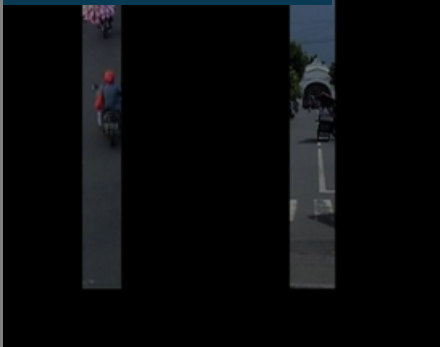
POSTED ON
20 JUN 2022

Germany | ifa Artists'
Contacts grants
programme 2022



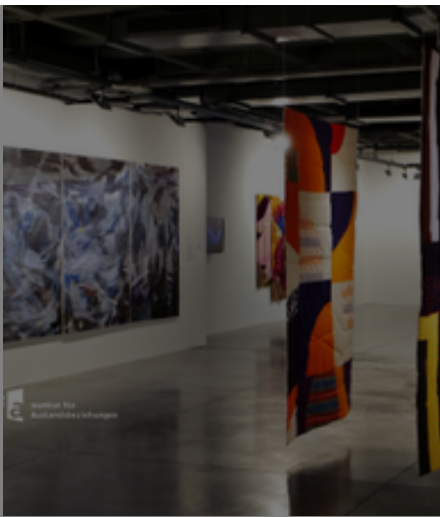
POSTED ON
07 AUG 2012

Germany | Artists
Contact fine art travel
grants programme



POSTED ON
02 SEP 2012

[Germany] Curatorial
Fellowship at Deutsches
Museum



POSTED ON
10 OCT 2016

Tara Books, India
seeks German intern



ABOUT ASEF CULTURE360

culture360.asef.org brings Asia and Europe closer by providing information, facilitating dialogue and stimulating reflection on the arts and culture of the two regions.

[MORE ABOUT ASEF CULTURE360](#) | [FAQ](#)

