

Privacy Settings

We use cookies to optimize our website and our service.

- ☒ Functional
- ☒ Statistics
- ☒ Marketing

Save

Functional only

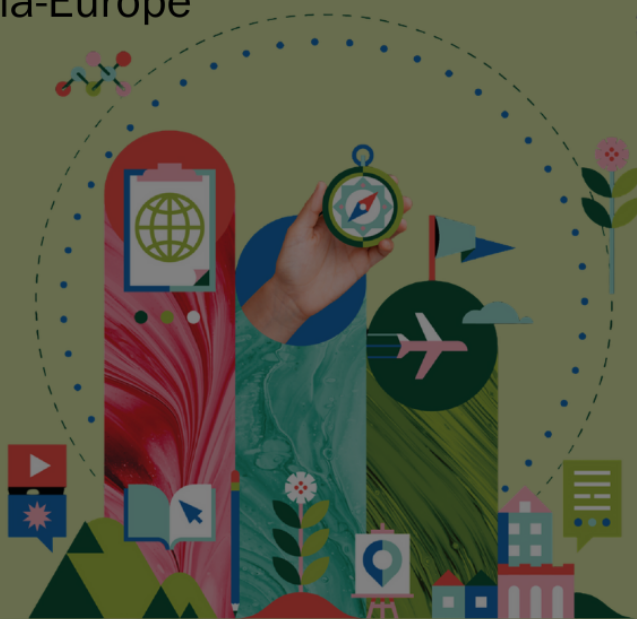
Accept all

Recalibrating the Compass: New Approaches to Asia-Europe Cultural Relations | New Publication Launched!

Recalibrating the Compass: New Approaches to Asia-Europe Cultural Relations

Final report and
future orientations

culture
360
ASEF.org



ASEF culture360 is delighted to present *Recalibrating the Compass: New Approaches to Asia-Europe Cultural Relations*, a new publication presenting the key findings and recommendations that emerged from our *Recalibrating the Compass* roundtable series.

Authored by cultural policy expert Jordi Baltà Portolés, who co-designed the roundtables and wrote the individual reports, *Recalibrating the Compass: New Approaches to Asia-Europe Cultural Relations* summarises the insights, ideas and recommendations highlighted throughout the series and presents guidance for future work in the field of Asia-Europe cultural relations.

Apart from passing on knowledge on how to navigate the current challenges of international cultural relations, this publication will provide some starting points when thinking about the roles stakeholders can play in the field of Asia-Europe cultural collaboration and possible strategies for a post-pandemic recovery.

We invite you to discover ways to navigate the complexities of cultural relations and we look forward to developing stronger relationships between Asia and Europe.

Download it here: *Recalibrating the Compass: New Approaches to Asia-Europe Cultural Relations*

Read also:

- [Recalibrating the Compass | Empowering the Creative Ecosystem - Roundtable #1 Report](#)
- [Recalibrating the Compass | Culture's role in addressing the Climate Crisis - Roundtable #2 Report](#)

[Recalibrating the Compass | Sustainable and ethical practices in the cultural sector - Roundtable #3 Report](#)

- [Recalibrating the Compass | Cultural Heritage and Tourism in Post-pandemic International Cooperation - Roundtable #4 Report](#)
- [Recalibrating the Compass | Rethinking cultural diplomacy in times of global crisis - Roundtable #5 Report](#)

SIMILAR CONTENT

POSTED ON
26 JUN 2023

Recalibrating the Compass: New Approaches to Asia-Europe Cultural Relations | Publication Launched!

#ASEFCulture

NEWS
ASIA EUROPE

POSTED ON
25 APR 2022

Recalibrating the compass: What Future for Asia-Europe cultural relations? | ASEF Roundtable Series

Cultural Relations?

ASEF Culture Roundtable Series

NEWS
ASIA EUROPE

POSTED ON
04 AUG 2023

ENCATC Magazine, Issue n°05, July 2023

ENCATC MAGAZINE

ENCATC MAGAZINE

ENCATC MAGAZINE

ENCATC MAGAZINE

ENCATC MAGAZINE

ENCATC MAGAZINE

ENCATC MAGAZINE

ENCATC MAGAZINE

PUBLICATIONS
ASIA EUROPE

FROM - TO
03 NOV 2022 - 03 NOV 2022

ASEF Roundtable #5: Recalibrating the Compass | Rethinking Cultural Diplomacy in Times of Global Crisis

Cultural Diplomacy in Times of Global Crisis

Roundtable
3 November 2022

EVENTS

FROM - TO

31 AUG 2022 - 31 AUG 2022

ASEF Roundtable #4: Recalibrating the Compass | Cultural Heritage and Tourism in Post-pandemic International Cooperation

International Cooperation

Roundtable
31 August 2022

EVENTS

ASIA EUROPE

POSTED ON

29 NOV 2022

What Future for Asia-Europe Cultural Relations? Key findings from ASEF Roundtable Series 2022

Cultural Relations?

ASEF Culture Roundtable Series

Recalibrating
Compass Series
and Critical Focus
in the Cultural
Roundtable
30 July 2022
ASEF Culture
Roundtable Series

POLICY DIALOGUE

ASIA EUROPE

COUNTRIES

[ASIA](#) [EUROPE](#)

THEMES

[COVID-19](#) [CREATIVE INDUSTRIES](#) [CULTURAL DIPLOMACY](#) [CULTURAL POLICY](#) [CULTURAL RELATIONS](#)
[CULTURE AND DEVELOPMENT](#) [ECONOMY AND SOCIETY](#)

ABOUT ASEF CULTURE360

culture360.asef.org brings Asia and Europe closer by providing information, facilitating dialogue and stimulating reflection on the arts and culture of the two regions.

MORE ABOUT ASEF CULTURE360 | [FAQ](#) | [f](#) [X](#) [@](#)

This website was created and maintained with the financial support of the European Union. Its contents are the sole responsibility of the Asia-Europe Foundation (ASEF) and do not necessarily reflect the views of the European Union.



[About us](#)
[Team](#)
[Partners](#)
[FAQ](#)
[Brand guidelines](#)
[How to partner with us](#)
[Contact us](#)
[#ASEFCulture](#)

ASIA-EUROPE FOUNDATION (ASEF) 2017 | [TERMS OF SERVICE & PRIVACY POLICY](#) | [CREATIVE COMMONS](#)
[ATTRIBUTION - NON COMMERCIAL SHARE](#)