

NEWS & EVENTS > Common Ground: Building a Foundation for Homes of Commons co-creation lab

FROM - TO
28 OCT 2020 - 29 OCT 2020

Common Ground: Building a Foundation for Homes of Commons co-creation lab



In the framework of the **Cultural and Creative Spaces and Cities (CCSC)** project, **Timelab** and the **University of Antwerp**, in cooperation with **European Cultural Foundation (ECF)** and **Trans Europe Halles (TEH)**, organise the hybrid co-creation lab **Common Ground: Building a Foundation for Homes of Commons**, taking place online and in Ghent, Belgium 28-29 October.

The event is free and will take place both physically in Ghent and digitally (livestream and interactive digital sessions). **Registration is required - and closes on 25 October.**

Background of the event

The event follows the previous co-creation lab that took place in June 2020, **Common Sense: Let's Build a Bottom-Up European Democracy**. The central topic was how to build "**Homes of Commons**" as tools to bring

Europe closer to citizens. A Home of Commons strives to be a hybrid— physical and digital— space of encounter between the European Union and the local level. Already existing cultural and creative spaces have the potential to be(come) Homes of Commons. One of the proposals that came out of the previous co-creation lab, was therefore to engage existing local facilitators as Homes of Commons, and to interconnect them in a network.

The School of Commons

In this spirit, we will explore the concept of a “**School of Commons**” in the upcoming co-creation lab as a tool to enable the transition of local cultural and creative spaces into Homes of Commons. Over the last 4 years, Timelab has developed a **School of Commons** in Ghent, based on a deep analysis of commons practices. A multidisciplinary team created an open set of **seven patterns** - ***Dream, Practice, Identity, Organise, Impact, Resources and Context*** - to exchange knowledge and expertise about commoning and to start the transition to make your organisation, project or process more commons-based.

About the co-creation lab

The overall objective of the co-creation lab is to prototype Homes of Commons through the framework of the School of Commons. The first day we will focus on the characteristics of Homes of Commons. The second day we will dive into broader questions such as the certification of Homes of Commons and how to implement and interconnect them in a network. These co-creation sessions will take place both physically and digitally.

Participants of the physical co-creation lab will also have the opportunity to participate in a tour of Timelab and to experience parts of the School of Commons game (see note below): a methodology with gaming elements. Participants can test and apply tools and methods for commoning, bring in their own tools and methods, and work on real cases. These sessions will be livestreamed.

The registration for the event is open to **25 October 2020**.

SIMILAR CONTENT

FROM - TO
22 JUN 2020 - 30 JUN 2020



EVENTS

BELGIUM EUROPE NETHERLANDS

FROM - TO

29 SEP 2018 - 01 OCT 2018



EVENTS

ASIA BELGIUM EUROPE

FROM - TO

09 NOV 2017 - 11 NOV 2017

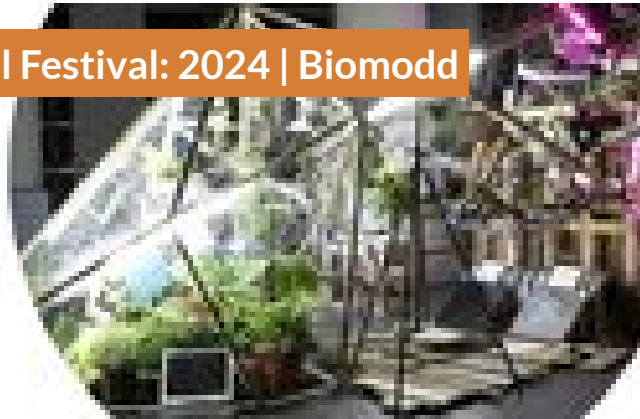
The Value of Museum Collections - NEMO 25th Annual Conference

FROM - TO
30 AUG 2024 - 07 SEP 2024

Asia-Europe Cultural Festival: 2024 | Biomodd [TT015]

COLOGIES

COLOGIES



#ASEFCulture

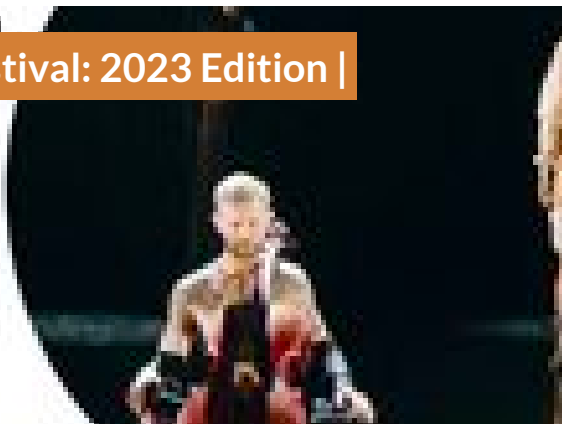
EVENTS

PHILIPPINES UNITED KINGDOM

FROM - TO
22 OCT 2023 - 01 NOV 2023

Asia-Europe Cultural Festival: 2023 Edition | Programme announced!

- 1 Nov 2023
ore



#ASEFCulture

EVENTS

ASIA CAMBODIA ESTONIA EUROPE FRANCE ITALY JAPAN KOREA LAO PDR MALAYSIA
NETHERLANDS SINGAPORE THAILAND VIET NAM

FROM - TO
16 AUG 2021 - 04 SEP 2021

Docs By The Sea Accelerator 2021 - digital edition

A SUPPORTIVE
ECOSYSTEM FOR
DOCUMENTARY FILMS
IN SOUTHEAST ASIA

EVENTS

INDONESIA INTERNATIONAL

WEBSITE

[HTTPS://WWW.SPACESANDCITIES.COM/EVENT/POLICY-CO-CREATION-EVENT-
GHENT/](https://www.spacesandcities.com/event/policy-co-creation-event-ghent/)

COUNTRIES

BELGIUM EUROPE INTERNATIONAL

THEMES

COVID-19 CULTURAL MANAGEMENT CULTURAL POLICY

ABOUT ASEF CULTURE360

culture360.asef.org brings Asia and Europe closer by providing information, facilitating dialogue and stimulating reflection on the arts and culture of the two regions.

MORE ABOUT ASEF CULTURE360 | [FAQ](#) | [f](#) [X](#) [@](#)

This website was created and maintained with the financial support of the European Union. Its contents are the sole responsibility of the Asia-Europe Foundation (ASEF) and do not necessarily reflect the views of the European Union.



About us
Team
Partners
FAQ

Brand guidelines
How to partner with us
Contact us
#ASEFCulture

ASIA-EUROPE FOUNDATION (ASEF) 2017 | [TERMS OF SERVICE & PRIVACY POLICY](#) | [CREATIVE COMMONS ATTRIBUTION -
NON COMMERCIAL SHARE](#)