

**NEWS & EVENTS** > Copenhagen | 11th WOMEX World Music Expo

FROM - TO  
26 OCT 2011 - 30 OCT 2011

## Copenhagen | 11th WOMEX World Music Expo



**WOMEX** promises **five days of music, networking**, conferences, films and business, and encounters in world music. The 11th World Music Expo takes place in Copenhagen 26-30 October.

[http://www.youtube.com/watch?v=6UU-d\\_LjdW4&feature=player\\_embedded](http://www.youtube.com/watch?v=6UU-d_LjdW4&feature=player_embedded)

WOMEX opens with **Hungarian Heartbeats**, an exciting, wide-ranging concert programme created especially for the **WOMEX 11 Opening**. As well as **featuring three Hungarian bands** exploring varied traditions, the show highlights a number of **versatile soloists** brought together for this special performance. The **Showcase Festival**, selected by an international jury presents music from Finland, Russia, Pakistan, Latvia, Spain, Japan, Portugal, France and many many more countries.



"The most important international professional market of world music of every kind. This international fair brings together professionals from the worlds of folk, roots, ethnic and traditional music and also includes concerts, conferences and documentary films. It contributes to networking as an effective means of promoting music and culture of all kinds across frontiers." **UNESCO Global Alliance for Cultural Diversity**

*Image: The Other Europeans*

---

## SIMILAR CONTENT

DEADLINE  
17 MAR 2017



**OPEN CALLS**  
INTERNATIONAL POLAND

DEADLINE  
13 MAR 2020

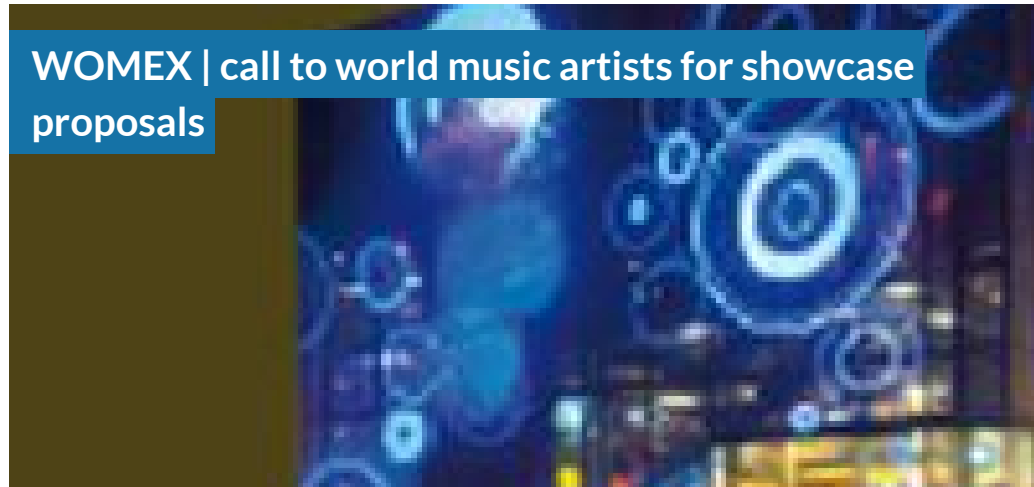
Budapest | WOMEX 20 call for proposals

CALL FOR PROPOSALS  
FOR WOMEX

**OPEN CALLS**  
HUNGARY INTERNATIONAL

DEADLINE  
15 APR 2011

WOMEX | call to world music artists for showcase proposals



**OPEN CALLS**  
INTERNATIONAL

DEADLINE  
16 APR 2021



POSTED ON  
04 OCT 2011



NEWS  
GREECE INTERNATIONAL UNITED KINGDOM

DEADLINE  
13 APR 2012



OPEN CALLS  
GREECE INTERNATIONAL

WEBSITE

[HTTP://WWW.WOMEX.COM/](http://www.womex.com/)

**COUNTRIES**

DENMARK HUNGARY INTERNATIONAL

**DISCIPLINE**

MUSIC

**ABOUT ASEF CULTURE360**

[culture360.asef.org](http://culture360.asef.org) brings Asia and Europe closer by providing information, facilitating dialogue and stimulating reflection on the arts and culture of the two regions.

**MORE ABOUT ASEF CULTURE360 | [FAQ](#) | [f](#) [X](#) [@](#)**

This website was created and maintained with the financial support of the European Union. Its contents are the sole responsibility of the Asia-Europe Foundation (ASEF) and do not necessarily reflect the views of the European Union.



About us

Team

Partners

FAQ

Brand guidelines

How to partner with us

Contact us

#ASEFCulture