

Privacy Settings

We use cookies to optimize our website and our service.

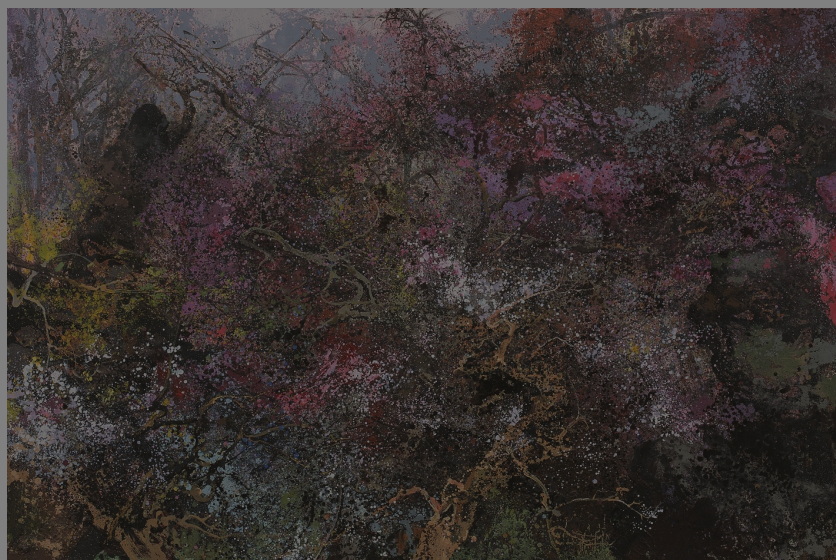
- ☒ Functional
- ☒ Statistics
- ☒ Marketing

Save

Functional only

Accept all

Ireland



The **Chester Beatty Library**, in

Dublin, Ireland, an ASEMUS member, currently presents **Ireland's first exhibition by one of China's leading contemporary landscape painters, Hong Ling** (b. 1955). "**Hong Ling: A Retrospective**", which can be visited until 29 January 2017, follows the artist's recent retirement from teaching at Beijing's Central Academy of Fine Arts, and charts the significant contribution Hong Ling has made to the world of Chinese landscape painting. **Sixteen paintings in oil and in ink are exhibited**, ranging from a small painting of poplar trees in the grounds of the Temple of Heaven painted while Hong Ling was a student in 1979, just after the Cultural Revolution (1966–76), to the rich and immersive *Rainbow-Like* of 2015 that stands two metres high and three metres wide—its dramatic scale matched by its vibrant use of colour. The exhibition was opened by author and journalist, Conor O'Clery and the artist travelled to Dublin for the event. Hong Ling trained as an oil painter and he is best known for his technically rich canvases in this imported medium. While he finds much inspiration in the work of European painters, **his own practice has come to engage deeply with the philosophies of China's landscape painting traditions**, capturing the essence of the landscape rather than its likeness.



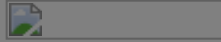
In the early 1990s, Hong Ling built his studio in

the foothills of the Yellow Mountains of China's Anhui Province, a UNESCO World Heritage Site that has long inspired painters of landscape. Hong Ling reveals the charged atmosphere of this dramatic location. Exhilarating and immersive, **his paintings distil the bold colours of the shifting seasons** as his brush invokes the heavy mists that weave among pine-clad peaks. As explorations of the human experience of nature through the medium of oil on canvas and more recently ink, Hong Ling's paintings also tell **the story of an artist's personal development against the backdrop of intense changes that have transformed life in China** over the last 50 years. Chester Beatty Library Director, **Fionnuala Croke** said 'the Library is unique among Irish museums for its holdings of Asian art, and the potential these collections create for developing relationships between Ireland and Asia. **This exhibition will give visitors a rare opportunity to enjoy China's rich and dynamic landscape traditions** through paintings of exquisite beauty.' "Hong Ling: A Retrospective" is **curated by Dr Mary Redfern**, Curator of the Library's East Asian Collection. The exhibition at the Chester Beatty Library is part of a touring retrospective sponsored by UNEEC Culture and Education Foundation, Taiwan, and organised with the artist's gallery, Soka Art, and SOAS University of London. The exhibition is complemented by **a programme of public events** including lectures and workshops, and a lavishly illustrated catalogue will be available from the Library's gift shop. For **additional information** about "Hong Ling: A Retrospective", please visit <http://www.cbl.ie/Exhibitions/Temporary-Exhibitions.aspx>
Pictured above: 'Rainbow-like' (2015, Private collection); and 'A Peak of Reds' (2014, private collection). Both (c) Hong Ling; courtesy Soka Art.

SIMILAR CONTENT

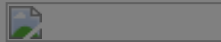
FROM - TO
17 NOV 2011 - 26 FEB 2012

Photo Exhibition Dublin: China through Scottish eyes



BY **JORDI BALTÀ PORTOLÉS**
19 OCT 2018 - 28 APR 2019

Exhibition: "Gift of a Lifetime: Treasures from Chester Beatty's Collection"

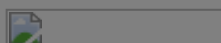


POSTED ON
31 JAN 2013

[Museum Job Ireland] Head of Collections, Chester Beatty Library

POSTED ON
28 MAR 2012

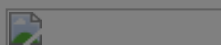
Chester Beatty Library, Ireland



NEWS

BY JORDI BALTÀ PORTOLÉS
05 AUG 2018

Internship in Conservation at the Chester Beatty Library, Dublin



BY JORDI BALTÀ PORTOLÉS
14 MAR 2015 - 14 JUN 2015

Exhibition: "Seven Treasures: Japanese Cloisonné Enamels" | Ireland

COUNTRIES

CHINA IRELAND

THEMES

HERITAGE MUSEUMS



ABOUT ASEF CULTURE360

culture360.asef.org brings Asia and Europe closer by providing information, facilitating dialogue and stimulating reflection on the arts and culture of the two regions.

MORE ABOUT ASEF CULTURE360 | FAQ |   

EVENTS

IRELAND JAPAN UNITED KINGDOM

This website was created and maintained with the financial support of the European Union. Its contents are the sole responsibility of the Asia-Europe Foundation (ASEF) and do not necessarily reflect the views of the European Union.



About us

Team

Partners

FAQ

Brand guidelines

How to partner with us

Contact us

#ASEFCulture