

NEWS & EVENTS > Tokyo | Future and the Arts exhibition

FROM - TO
19 NOV 2019 - 29 MAR 2020

Tokyo | Future and the Arts exhibition



Future and the Arts: AI, Robotics, Cities, Life - How Humanity Will Live Tomorrow - a major international exhibition at the Mori Art Museum, Tokyo looks at **What Is True Affluence, What Is It to Be Human, What Is Life?** The exhibition runs 19 November 2019 till 29 March 2020.

Advances in technology over the past few years are now starting to have a significant impact on various aspects of our lives. It is said that not too far in the future, human beings will be entrusting many of their decisions to AI (artificial intelligence) which will then supersede human intelligence; the advent of “singularity” will potentially usher in enormous changes to our society and lifestyles. Another development, that of blockchain

technology, looks set to build new levels of trust and value into our social systems, while advances in biotechnology will have a major impact on food, medicine, and the environment. It is also possible that one day, we humans will be able to extend our physical functions, and enjoy longer life spans. The effect of such changes may not be necessarily and universally positive, yet surely we need to at least acquire a vision of what life may look like in the next 20-30 years, and ponder the possibilities of that new world. Doing so will also spark fundamental questions about the nature of affluence and of being human, and what constitutes life.

Future and the Arts: AI, Robotics, Cities, Life - How Humanity Will Live Tomorrow, consisted of five sections: i.e. "New Possibilities of Cities;" "Toward Neo-Metabolism Architecture;" "Lifestyle and Design Innovations;" "Human Augmentation and Its Ethical Issues;" and "Society and Humans in Transformation," will showcase over 100 projects/works. The exhibition will aim to encourage us to contemplate cities, environmental issues, human lifestyles and the likely state of human beings as well as human society - all in the imminent future, via cutting-edge developments in science and technology including AI, biotechnology, robotics, and AR (augmented reality), plus art, design, and architecture influenced by all these.

The exhibition is an international collaboration, with co-curation from ArtScience Museum, Singapore, curatorial advice from SymbioticA The University of Western Australia, and grants from Adam Mickiewicz Institute / culture.pl, Australian Embassy Tokyo, The Swiss Arts Council Pro Helvetia.

Image: ecoLogicStudio - H.O.R.T.U.S. XL Astaxanthin.g, 2019 ©NAARO


SIMILAR CONTENT

DEADLINE
30 APR 2024



Korea | National Asian Culture Center CREATORS Residency 2024

BY BRIDGET TRACY TAN
14 NOV 2023



The seer and the seen: challenges faced by artmakers in the age of AI

FEATURES
ASIA

FROM - TO
25 OCT 2018 - 27 OCT 2018



ctrl+shift HUMAN: Arts, Sciences and Technologies in Code Dependent Societies - CAE conference in Timisoara

EVENTS
EUROPE ROMANIA

BY LIU XIAOYI
29 AUG 2023

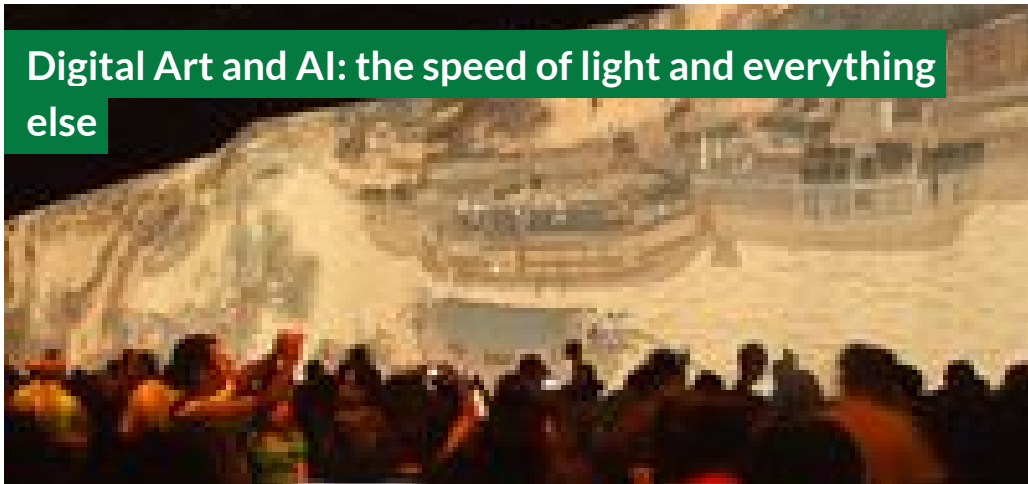
On the Potential, Shortcomings, and Other Aspects of Writing with Artificial Intelligence



FEATURES
ASIA SINGAPORE

BY BRIDGET TRACY TAN
07 NOV 2023

Digital Art and AI: the speed of light and everything else



FEATURES
ASIA

FROM - TO
19 FEB 2016 - 21 MAR 2016



WEBSITE

https://www.mori.art.museum/en/exhibitions/future_art/index.html

COUNTRIES

INTERNATIONAL JAPAN

THEME

ARTS AND SCIENCE

DISCIPLINES

NEW MEDIA VISUAL ARTS

ABOUT ASEF CULTURE360

culture360.asef.org brings Asia and Europe closer by providing information, facilitating dialogue and stimulating reflection on the arts and culture of the two regions.

[MORE ABOUT ASEF CULTURE360](#) | [FAQ](#) | [!\[\]\(47734e4656765d20df4fdbd5b7aff048_img.jpg\)](#) [!\[\]\(effba44ea72cb8c77bdc1dac75561f86_img.jpg\)](#) [!\[\]\(08cc52f09689b06e3ee5a48cc9fb5c33_img.jpg\)](#)

This website was created and maintained with the financial support of the European Union. Its contents are the sole responsibility of the Asia-Europe Foundation (ASEF) and do not necessarily reflect the views of the European Union.



About us
Team
Partners
FAQ
Brand guidelines
How to partner with us

Contact us
#ASEFCulture

ASIA-EUROPE FOUNDATION (ASEF) 2017 | [TERMS OF SERVICE & PRIVACY POLICY](#) | [CREATIVE COMMONS ATTRIBUTION - NON COMMERCIAL SHARE](#)