

2020 ISPA Global Fellowship - call for applications by Arts organisations and culture

 Home

Search...

Menu

- **OUR WORK**
- **INSIGHTS**
- **OPPORTUNITIES**
- **NEWS & EVENTS**
- **RESOURCES**

[Opportunities](#) > Become an IETM Global Connector for 2021-22

DEADLINE
31 MAY 2021

Become an IETM Global Connector for 2021-22



The 2021-2022 IETM Global Connect call for applications is now open. IETM Global Connect is open to performing arts professionals from across the globe, offering connections, inspiration and peer-to-peer learning.

Please read carefully the details of the programme below before **applying**.

What are the aims of IETM Global Connect?

IETM Global Connect is one of IETM's initiatives to make the network more diverse, inclusive and accessible.

The aims of Global Connect are to enable performing arts professionals from across the globe to:

- Expand their international network and find new collaborators and partners from all horizons;
- Find new inspirations in their professional lives which they can share with their communities;
- Develop new skills and knowledge through peer-to-peer learning;
- Actively contribute to IETM's activities and development and bring fresh perspectives to its members and the global performing arts sector in a long-term perspective.

What does IETM Global Connect offer?

As part of the programme, selected IETM Global Connectors benefit from:

- **IETM Membership:** IETM Global Connectors receive the IETM membership for 2021 and 2022, and access to all members' benefits, including full access to the IETM internal digital platform and members newsletters, opportunities to use the upcoming

IETM partners search tool and to share their own news via IETM's communication channels.

- **Access to IETM Events:** As included in their 2021-2022 IETM membership, Global Connectors get free access to IETM events in 2021 and 2022. This means, free entrance to all seminars, workshops, talks hosted by the network and opportunities to engage with the large and diverse IETM membership representing all sections of the performing arts – from national institutions to independent artists.
- **IETM Global Connectors Gathering:** Once a year, on the occasion of a large IETM event, Global Connectors come together for a full day of peer-to-peer networking, presentations and knowledge exchange with IETM members and Associate Members.
- **Travel Bursary:** All selected Global Connectors will receive a travel bursary to attend one IETM event. Access to the One Day Global Connectors Gathering will be free of charge, and meals will be provided.

Important note: Due to the ongoing COVID-19 pandemic, the first year programme will start in October 2021 with an online event. A travel bursary will be provided to take part in a physical IETM event in 2022.

Who can apply for the IETM Global Connect Programme?

IETM Global Connect is open to performing arts professionals worldwide (producers, artists, managers, presenters, etc) working in an organisation or as freelance / self-employed.

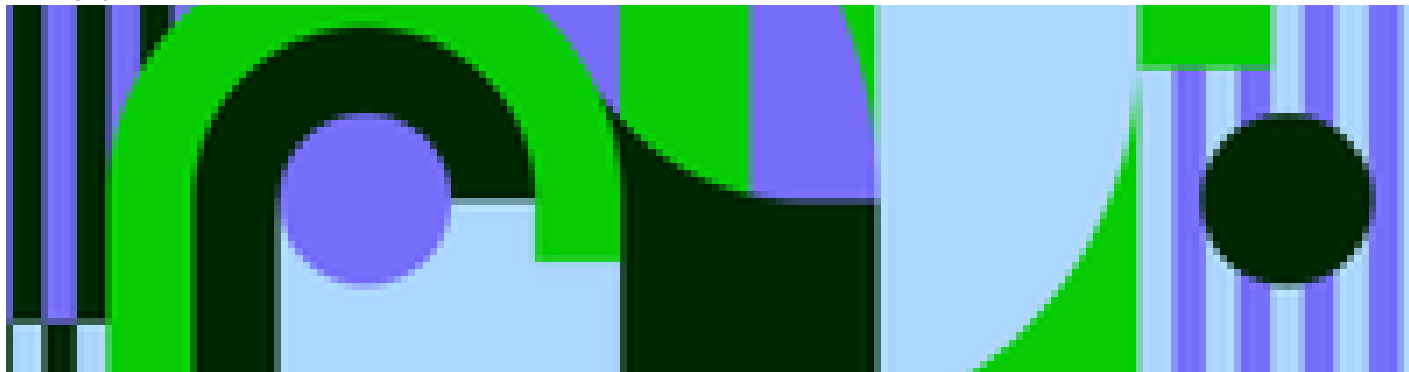
Selection criteria are that applicants:

- Are currently working in the contemporary performing arts anywhere in the world;
- Have a minimum of five years professional experience in the performing arts field;
- Have demonstrated a commitment to increase global awareness, inclusion, accessibility and connectivity for the benefit of their communities;
- Are able to communicate well in English (or through sign language interpretation if required).

Deadline for applications: 31 May at 17:00 CEST

Similar content

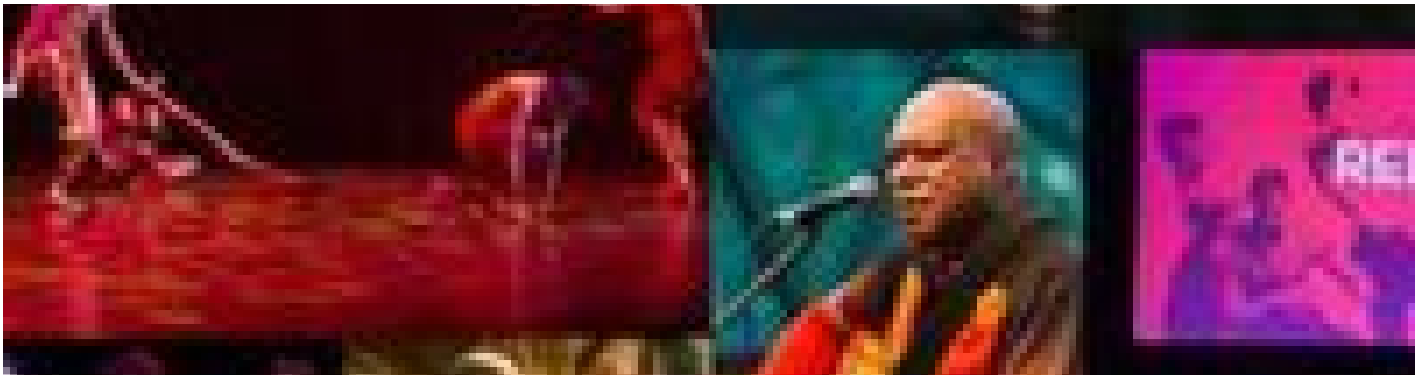
DEADLINE
12 DEC 2022



OPEN CALLS
BELGIUM DENMARK EUROPE INTERNATIONAL
FROM - TO
01 OCT 2020 - 02 OCT 2020



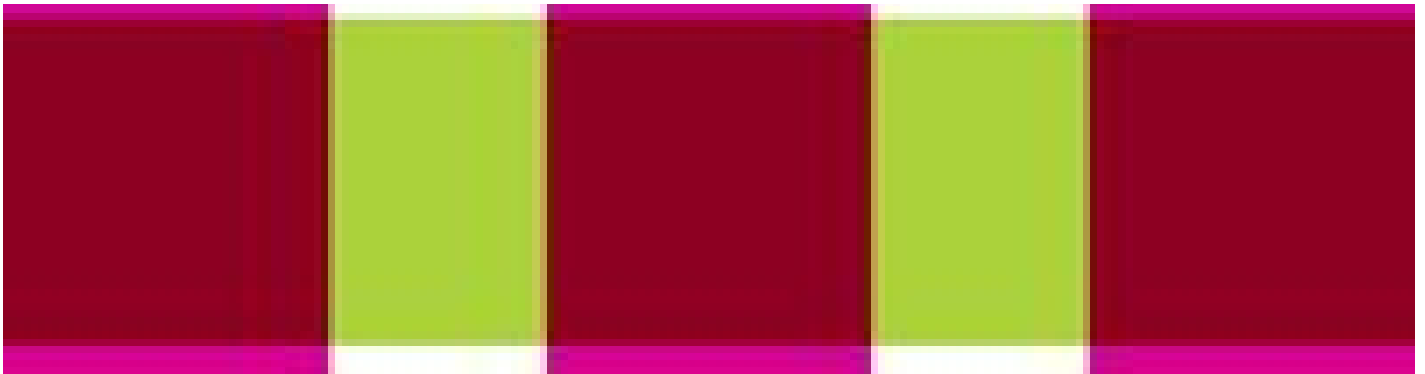
EVENTS
AUSTRALIA CHINA CROATIA CZECH REPUBLIC DENMARK FRANCE GERMANY HUNGARY IRELAND ITALY JAPAN LATVIA NETHERLANDS ROMANIA
SLOVENIA SPAIN UNITED KINGDOM
DEADLINE
01 SEP 2016



OPEN CALLS
INTERNATIONAL
DEADLINE
11 FEB 2022



OPEN CALLS
EUROPE
POSTED ON
16 MAY 2011



ORGANISATIONS DIRECTORY
BELGIUM INTERNATIONAL
DEADLINE
12 JUL 2019



OPEN CALLS
INTERNATIONAL

Website

- <https://www.ietm.org/en/globalconnect/aims-and-criteria>

Countries

- Europe
- International

Themes

- Cultural Management
- Professional Development

Discipline

- Performing Arts

View as PDF

Print

Share on

Share...

ABOUT ASEF CULTURE360

culture360.asef.org brings Asia and Europe closer by providing information, facilitating dialogue and stimulating reflection on the arts and culture of the two regions.

MORE ABOUT ASEF CULTURE360 | FAQ |


This website was created and maintained with the financial support of the European Union. Its contents are the sole responsibility of the Asia-Europe Foundation (ASEF) and do not necessarily reflect the views of the European Union.

About us Team Partners FAQ Brand guidelines How to partner with us Contact us #ASEFCulture
ASIA-EUROPE FOUNDATION (ASEF) 2017 | TERMS OF SERVICE & PRIVACY POLICY | CREATIVE COMMONS ATTRIBUTION - NON COMMERCIAL SHARE

Privacy Settings

We use cookies to optimize our website and our service.

- ☒ Functional
 - ☒ Statistics
 - ☒ Marketing
- Save Functional only Accept all

 This website was created and maintained with the financial support of the European Union.