

## Privacy Settings

We use cookies to optimize our website and our service.

- ☒ Functional
- ☒ Statistics
- ☒ Marketing

Save

Functional only

Accept all



Europe Beyond Access (EBA), Europe's largest initiative focusing on the active participation of artists with disabilities in mainstream dance and theatre, is looking for a Consortium Project Manager, to be based in Skånes Dansteater, Malmö in Sweden, from January 2024 to December 2027.

A total of **10 leading European performing arts institutions** are joining forces to **advance the work and careers of disabled artists** – including Deaf artists, artists with physical disabilities, sensory impairments and learning difficulties – through an ambitious programme of **transnational creation and circulation, artistic capacity building and institutional learning**.

## Tasks include

- Overall responsibility for the administration, planning and budgetary control of the project
- Chairing meetings
- Providing information for audit, evaluations, and project reporting
- Managing the collaborative elements of the project such as open calls for co-production, residency, and Lab Leaders

- Supporting the partners in the delivery of Work Packages they are leading
- Coordinating both internal and external communications
- Project process monitoring according to the agreed deliverables in close contact with the partner's project managers
- Coordinating the Project Management Tools

## Requirements

- Existing right to work in the EU
- Well documented experience with publicly funded international project management and administration (EU projects are an advantage)
- Well documented experience of Project Managing complex multi partner arts project, including proven excellent time/task management (professional experience in the fields of dance is an advantage)
- Knowledge of the Disability Arts sector in one or more country
- Knowledge of Access Adaptations which support disabled audiences/visitors/participants to achieve greater access to the arts
- Fluent spoken and written English. However, we do welcome applications from Deaf applicants or others who can achieve this qualification through access support

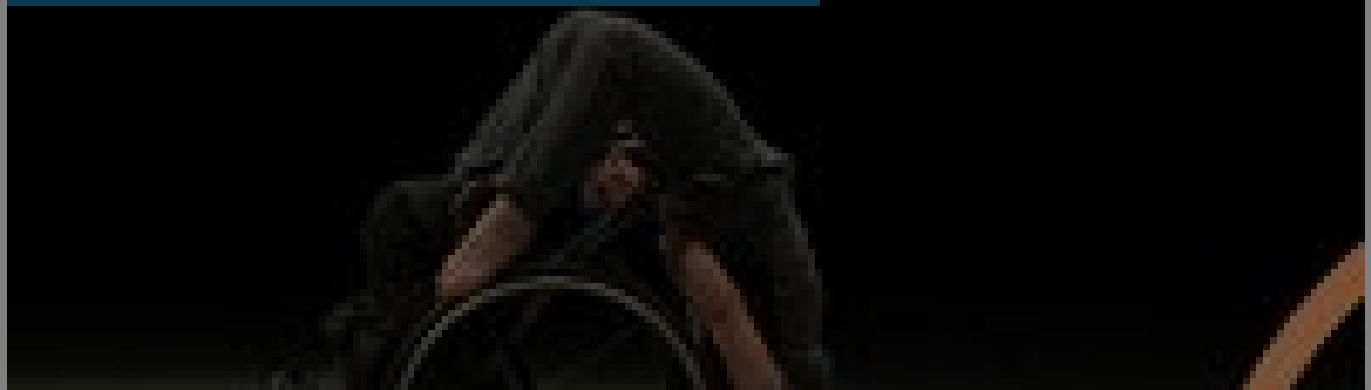
Europe Beyond Access Project Manager application guidelines

Deadline: 17 November 2023

## SIMILAR CONTENT

DEADLINE  
19 MAY 2024

### Europe Beyond Access co-productions 2024



GRANTS  
EUROPE

DEADLINE  
07 AUG 2015

UNFIXED residency call for Australian & UK artists with disabilities

RESIDENCIES

AUSTRALIA UNITED KINGDOM

POSTED ON

05 DEC 2023

Time to Act: Insights on Performing Arts and Disability in Europe

Two Years On  
Data-led insights on  
Performing Arts &

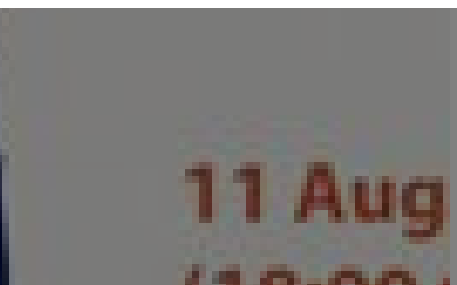
PUBLICATIONS

EUROPE ITALY POLAND SWEDEN

DEADLINE

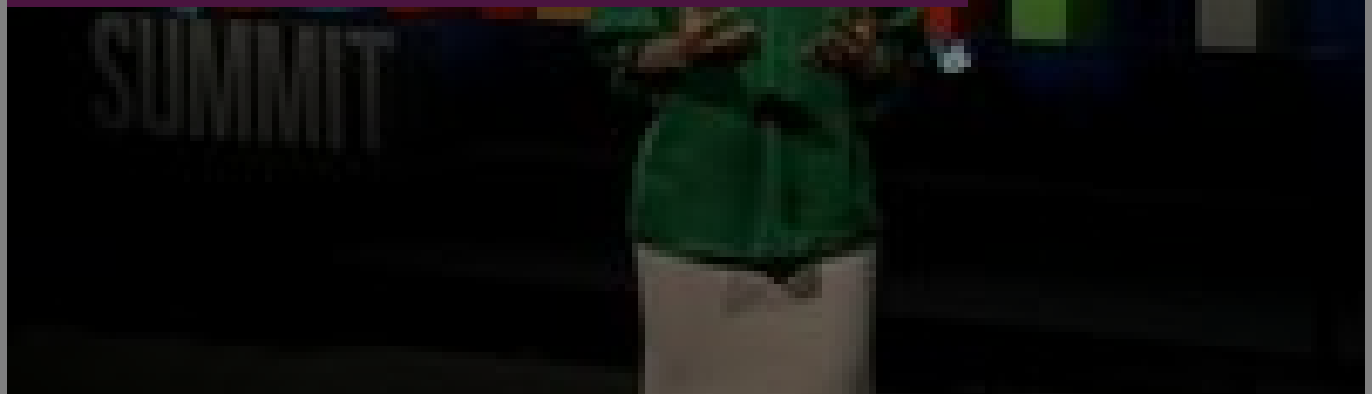
11 AUG 2017

Singapore International Foundation | Artists for a Better World - apply now



POSTED ON  
02 DEC 2022

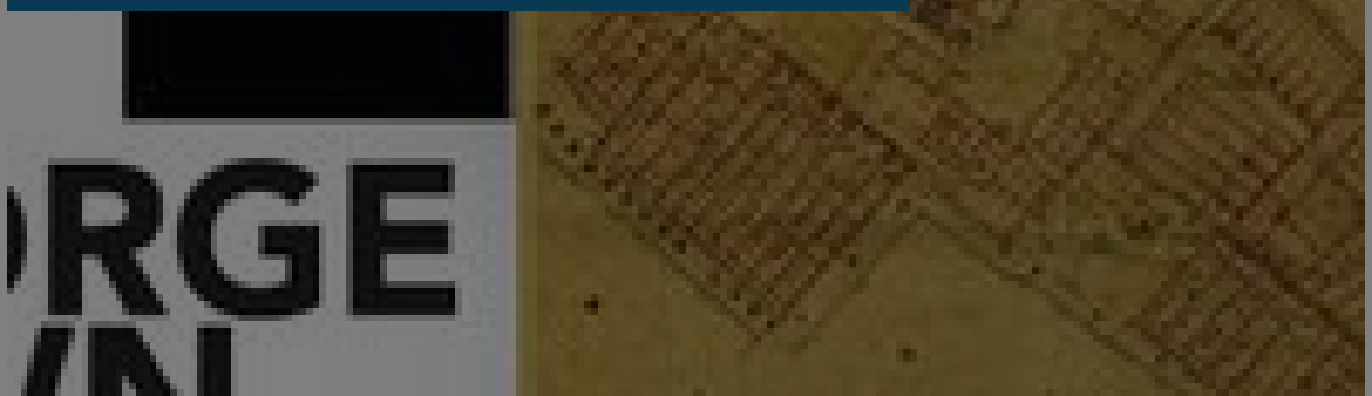
## Disability and the arts: Key challenges and resources



PUBLICATIONS  
INTERNATIONAL

DEADLINE  
31 MAR 2012

## George Town World Heritage Inc | open positions



JOBS  
ASIA MALAYSIA

WEBSITE  
[HTTPS://WWW.SKANESDANSTEATER.SE/EN/EUROPE-BEYOND-ACCESS-CONSORTIUM-PROJECT-MANAGER](https://www.skandesdanteater.se/en/europe-beyond-access-consortium-project-manager)

COUNTRIES  
EUROPE SWEDEN

## THEMES

CULTURE AND DEVELOPMENT ECONOMY AND SOCIETY

## DISCIPLINES

DANCE PERFORMING ARTS THEATRE

## ABOUT ASEF CULTURE360

[culture360.asef.org](http://culture360.asef.org) brings Asia and Europe closer by providing information, facilitating dialogue and stimulating reflection on the arts and culture of the two regions.

**MORE ABOUT ASEF CULTURE360 | [FAQ](#) | [f](#) [X](#) [@](#)**

This website was created and maintained with the financial support of the European Union. Its contents are the sole responsibility of the Asia-Europe Foundation (ASEF) and do not necessarily reflect the views of the European Union.



About us  
Team  
Partners  
FAQ  
Brand guidelines  
How to partner with us  
Contact us  
#ASEFCulture

ASIA-EUROPE FOUNDATION (ASEF) 2017 | [TERMS OF SERVICE & PRIVACY POLICY](#) | [CREATIVE COMMONS](#)  
ATTRIBUTION - NON COMMERCIAL SHARE