

**OPPORTUNITIES** > FRAGILE global performance call for participants

DEADLINE  
31 JUL 2010

## FRAGILE global performance call for participants



a global performance chain journey which

aims to make one fragile object travel all around the world calls for  
performance artists worldwide ready to connect and take responsibility.

Can ONE FRAGILE OBJECT, in times of email, chat and mobility, pass one  
time ALL AROUND THE WORLD safely – from hand to hand, charging  
itself with stories and people?

Will it be the same when it returns?

Modern performance artists are...

...well connected virtually on diverse exchange platforms.

...in a continuous and vibrant global exchange.

...global travellers.

...professionally and emotionally connected all over the world.

With FRAGILE - global performance chain journey performer from around the whole world work together in one same action, everybody the way he/she does. All will carry one object around the planet.

This will take time (months, years?). This is not a battle against time, or a "Travel around the world in 80 days".

It is the performative passing of an object from one performance artist's hand to the others, responsibly, trustfully and creatively.

The journey of the object and the performers will be communicated on [www.fragile-global-performance.net](http://www.fragile-global-performance.net), the [Facebook group](#) and the [YouTube channel](#).

The object will be fragile. It will pass through hundreds of people's hand around the fragile planet. The journey starts and ends in Florence, Italy.

**Deadline for registration: 31 July**

---

## SIMILAR CONTENT

FROM - TO

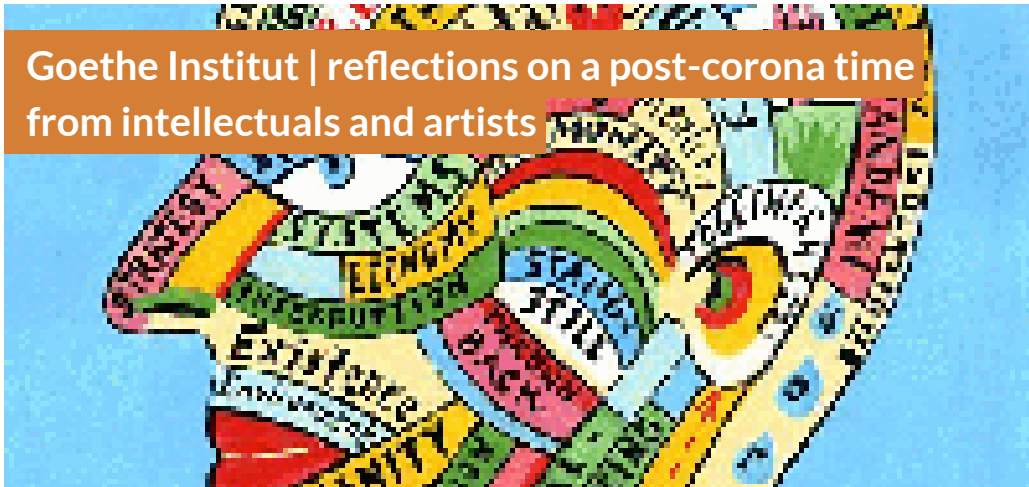
01 APR 2017 - 24 SEP 2017

## Netherlands | Qiu Zhijie: Journeys without Arrivals exhibition



POSTED ON  
19 MAY 2020

## Goethe Institut | reflections on a post-corona time from intellectuals and artists



NEWS  
GERMANY INTERNATIONAL

BY BEN EATON  
27 SEP 2019

## #artsandtechnology: Making art on the frontlines of conservation | Indonesia



INSIGHTS  
ASIA INDONESIA

POSTED ON  
29 APR 2020

## UNESCO Asia-Pacific - cultural resources during COVID-19

NEWS  
ASIA THAILAND

DEADLINE  
15 JUL 2019

## Bangladesh | URONTO Residential Art Exchange - apply now



RESIDENCIES  
BANGLADESH INTERNATIONAL

BY JORDI BALTÀ PORTOLÉS  
12 FEB 2016 - 14 AUG 2016

## Exhibition: "The Buddha" | The Netherlands



### WEBSITE

[HTTP://WWW.FRAGILE-GLOBAL-PERFORMANCE.NET](http://www.fragile-global-performance.net)

### COUNTRY

INTERNATIONAL

### THEME

ART AND ENVIRONMENT

### DISCIPLINES

FILM LITERATURE NEW MEDIA PERFORMING ARTS VISUAL ARTS

### EVENTS

**ABOUT ASEF CULTURE360**

**culture360.asef.org** brings Asia and Europe closer by providing information, facilitating dialogue and stimulating reflection on the arts and culture of the two regions.

**MORE ABOUT ASEF CULTURE360 | [FAQ](#) | [f](#) [X](#) [@](#)**

This website was created and maintained with the financial support of the European Union. Its contents are the sole responsibility of the Asia-Europe Foundation (ASEF) and do not necessarily reflect the views of the European Union.



About us  
Team  
Partners  
FAQ  
Brand guidelines  
How to partner with us

Contact us  
#ASEFCulture

ASIA-EUROPE FOUNDATION (ASEF) 2017 | [TERMS OF SERVICE & PRIVACY POLICY](#) | [CREATIVE COMMONS ATTRIBUTION - NON COMMERCIAL SHARE](#)