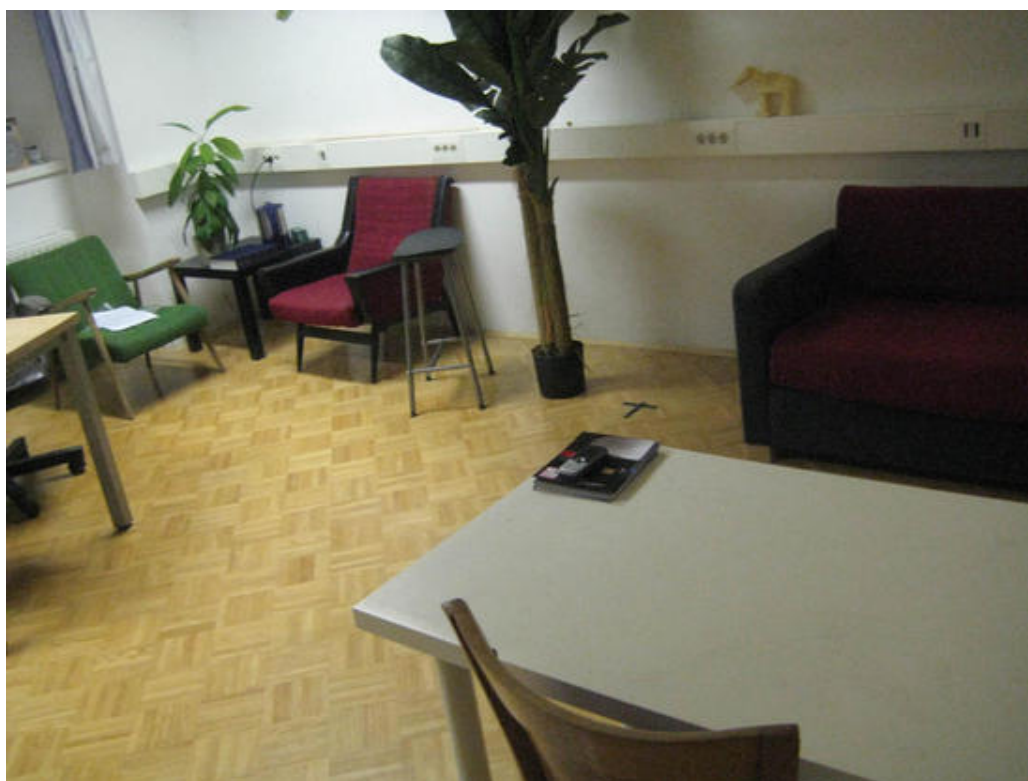


**OPPORTUNITIES** > Ljubljana | Museum of Transitory Art | residency open call

DEADLINE  
15 SEP 2011

## Ljubljana | Museum of Transitory Art | residency open call







**MoTA- Museum of Transitory Art, Ljubljana, is now accepting project proposals for its artist in residency program. Production residencies for artists interested in transitory art.**

**There are two types of residencies available at MoTA:**

**PRODUCTION RESIDENCY** – deadline **15 September** each year for residencies taking place in the following year.

MoTA accepts applications for production residencies for artists interested in transitory art. MoTA offers the opportunity **to produce and exhibit art projects** which research and experiment with:

-transitions in space and time

- -transitions in legal, moral, ethical, political positions
- -transitions of digital into analog world = requestion materiality



- -different realities
- -public space activism (installations, interventions, social actions, street art)
- -live practices (live cinema).

Artists selected through this open call are offered **full production support** and a **public showing of the work** produced according to the nature of the project. During the residency, a public presentation of the artist is required. Each resident artist is also asked to donate an artwork to the MoTA museum collection.

## **Facilities**

MoTA offers a living and working studio in the center of Ljubljana. The apartment has two rooms- a bedroom with two beds and a living room, a bathroom and a mini kitchen. The interior is basic and modest, but the studio location is in the heart of the old town, under the Ljubljana castle and next to the central market. MoTA does not provide meals for residents, but offers full support in getting around the city and other practicalities. MoTA is also happy to help with finding additional funding for projects. Artists who apply can live and work in the studio for a maximum of one month.

## **Technical Information**

There are computers with internet connection in the apartment. Specific technical equipment will be provided upon request.

## **Paid by host**

Production residencies offer full support for selected projects including accommodation, technical support, production costs and an artist fee.

## **Paid by artist**

Daily expenses.

## **Application requirements**



Please send your project proposal and information about your work to [mota.artists@gmail.com](mailto:mota.artists@gmail.com) by **15 September each year** (subject: Application for production residency) or to our address: MoTA – Museum of Transitory Art, Rožna dolina cesta II/36, 1000 Ljubljana.

Please include in your application a motivation letter stating how your work relates to any of the topics/ transitions mentioned above or how it addresses the yearly themes described at <http://www.motamuseum.com/Production/sonica-festival>. The applications will be reviewed by an international MoTA board of curators. Selected projects will be notified by email. Artists of all nationalities and at all professional levels are encouraged to apply.

### **SELF- DIRECTED ARTIST IN RESIDENCY - ongoing**

MoTA offers a living and working studio in the center of Ljubljana for artists who wish to participate in the self- directed residency program.

A shared interest in the topics relating to transitory art is desired, but not required. Self- directed residencies are not necessarily related to production of new work, but we do require a public presentation (artist talk) from the resident artist.

### **Facilities**

MoTA residency studio has two rooms- a bedroom with two beds and a living room, a bathroom and a mini kitchen. The interior is basic and modest, but the studio location is in the heart of the old town, under the Ljubljana castle and next to the central market. MoTA does not provide meals for residents, but offers full support in getting around the city and other practicalities. MoTA is also happy to help with finding additional funding for projects. Artists who apply can live and work in the studio for a maximum of two months.

### **Technical Information**

There are computers with internet connection in the apartment. We will help with finding any additional technical requirements.

### **Paid by artist**

The residency studio is available for a fee of 350 euros including all costs. Artists must also arrange their travels, daily expenses and funding for their



project, but we are happy to help with grants seeking at all times.

### Application requirements

Please send your project proposal and information about your work to [mota.artists@gmail.com](mailto:mota.artists@gmail.com) (subject: Application for self- directed residency) or to our address: MoTA, Rožna dolina cesta II/36, 1000 Ljubljana. We accept applications on an ongoing basis. Selected projects will be notified by email. Artists of all nationalities and at all professional levels are encouraged to apply.

---

## SIMILAR CONTENT


DEADLINE  
15 DEC 2012



OPEN CALLS  
CZECH REPUBLIC INTERNATIONAL POLAND SLOVENIA

DEADLINE  
30 APR 2020





## Switzerland | Fundaziun Nairs residency opportunities

DEADLINE  
21 JUN 2013



## Bangalore | residency at JAAGA for visiting German artists

RESIDENCIES  
GERMANY INDIA INTERNATIONAL

DEADLINE  
31 MAY 2020



## Finland | TUO TUO Kulttuuri Tila residency call

RESIDENCIES  
FINLAND INTERNATIONAL

DEADLINE  
10 JUL 2016



## Artist residencies at Charcoal Home, China



**RESIDENCIES**  
CHINA INTERNATIONAL

**DEADLINE**  
31 JAN 2013

## Netherlands | Spoffin Residency | open call to young theatre artists



**RESIDENCIES**  
INTERNATIONAL NETHERLANDS

**WEBSITE**  
[HTTP://WWW.MOTAMUSEUM.COM/RESIDENCY/OPEN-CALL](http://www.motamuseum.com/residency/open-call)

**COUNTRY**  
SLOVENIA

**DISCIPLINES**  
NEW MEDIA VISUAL ARTS



## ABOUT ASEF CULTURE360

[culture360.asef.org](http://culture360.asef.org) brings Asia and Europe closer by providing information, facilitating dialogue and stimulating reflection on the arts and culture of the two regions.

**MORE ABOUT ASEF CULTURE360 | [FAQ](#) | [!\[\]\(919a2cb85b99741a73c0c31a427236a8\_img.jpg\)](#) [!\[\]\(c9cd5a1c35167a83f09a35036fe5dcbd\_img.jpg\)](#) [!\[\]\(ae1936640fabdea8c18f922ca69733fe\_img.jpg\)](#)**

This website was created and maintained with the financial support of the European Union. Its contents are the sole responsibility of the Asia-Europe Foundation (ASEF) and do not necessarily reflect the views of the European Union.



About us  
Team  
Partners  
FAQ  
Brand guidelines  
How to partner with us  
Contact us  
#ASEFCulture