

OPPORTUNITIES > Residence Botkyrka | art as a catalyst in society

DEADLINE
30 SEP 2011

Residence Botkyrka | art as a catalyst in society



[caption id="attachment_7548" align="alignright" width="384"
caption="Löntagarfonderna - Henrik Andersson"]



[/caption]

Residence Botkyrka promotes **site-specific, context-based art** exploring the possibilities of art to influence a place and its identity. A new residency programme for internationally active artists, curators and architects interested in working site specifically.

In Botkyrka **art** is used as a **catalyst** in the **social structure**. Residence Botkyrka is a studio program for **internationally active artists, architects and curators**. Here different skills and experiences come together and develop at the intersection of artistic work, research, educational work, social and urban planning.

Botkyrka is part of Greater Stockholm and is one of Sweden's most international municipalities with people from about eighty different countries speaking more than hundred languages.

Residence Botkyrka promotes **site-specific, context-based art** exploring the possibilities of art to influence a place and its identity. Residence Botkyrka works in public spaces and supports projects that are difficult to implement without a prolonged stay. Residence Botkyrka is also interested in the issues of co-creation and how the interaction between people can contribute to social change.

Residence Botkyrka is a context-based residency program for internationally active artists, curators and architects who are interested in working site specifically. Residence Botkyrka is exploring new forms of art in the public space and is supporting projects that are hard to make without a longer stay. Residence Botkyrka wants to create good conditions for artistic freedom and develop the local participation.

The residency program is still new and we are continuously inviting artists. But is it also possible to contact us if you are interested in visiting the residency. The length of the staying varies between one and three months. Depending on how the work develops it is also possible to come back for a follow-up stay.

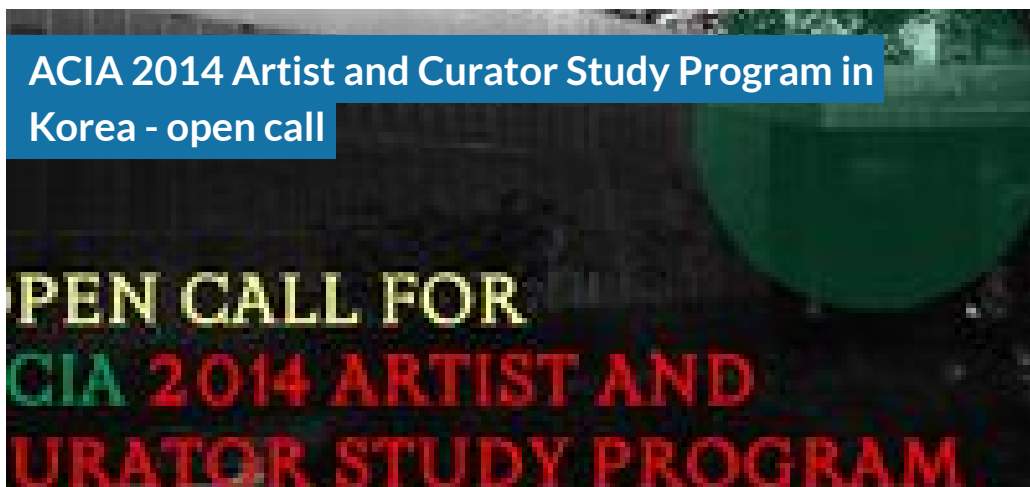
SIMILAR CONTENT

DEADLINE
20 JUN 2011



RESIDENCIES
JAPAN

DEADLINE
17 OCT 2014



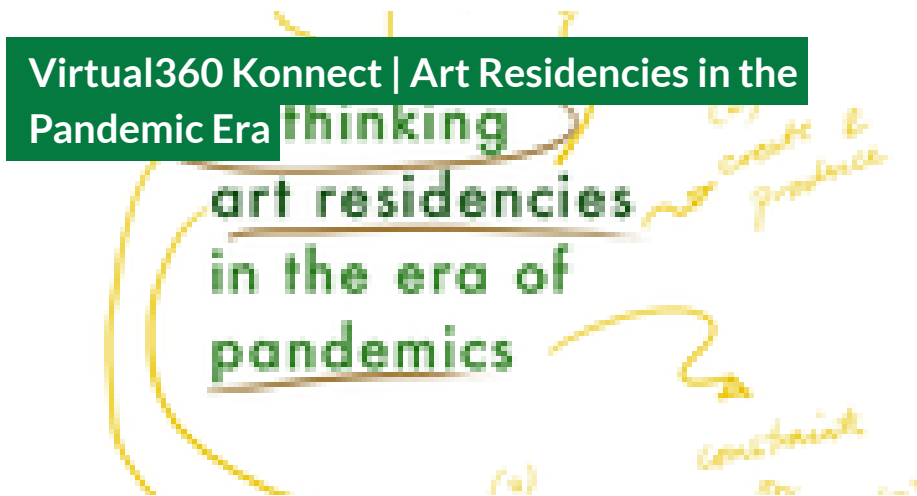
OPEN CALLS
ASIA JAPAN KOREA

DEADLINE
31 MAY 2014



RESIDENCIES
PHILIPPINES SPAIN

BY MICAH PINTO AND MINJI CHUN
19 FEB 2021



INSIGHTS
KOREA PHILIPPINES

BY HERMAN BASHIRON MENDOLICCHIO
27 APR 2017

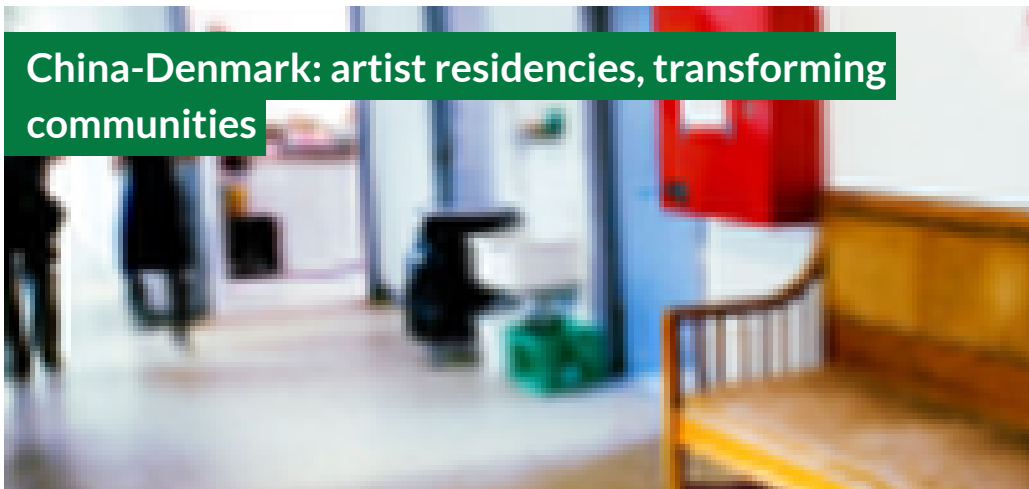
Urbanities: Exploring Art and Public Space in Pakistan



FEATURES

BY JEFFREY WITHAYA CAMPBELL
04 MAR 2009

China-Denmark: artist residencies, transforming communities



FEATURES

CHINA DENMARK

WEBSITE

[HTTP://WWW.RESIDENCEBOTKYRKA.SE/EN/INDEX.HTML](http://www.residencebotkyrka.se/en/index.html)

COUNTRY

SWEDEN

THEMES

ART AND ENVIRONMENT ECONOMY AND SOCIETY

DISCIPLINES

DESIGN VISUAL ARTS

ABOUT ASEF CULTURE360

culture360.asef.org brings Asia and Europe closer by providing information, facilitating dialogue and stimulating reflection on the arts and culture of the two regions.

MORE ABOUT ASEF CULTURE360 | [FAQ](#) | [f](#) [X](#) [@](#)

This website was created and maintained with the financial support of the European Union. Its contents are the sole responsibility of the Asia-Europe Foundation (ASEF) and do not necessarily reflect the views of the European Union.



About us

Team

Partners

FAQ

Brand guidelines

How to partner with us

Contact us

#ASEFCulture