

Privacy Settings

We use cookies to optimize our website and our service.

- ☒ Functional
- ☒ Statistics
- ☒ Marketing

Save

Functional only

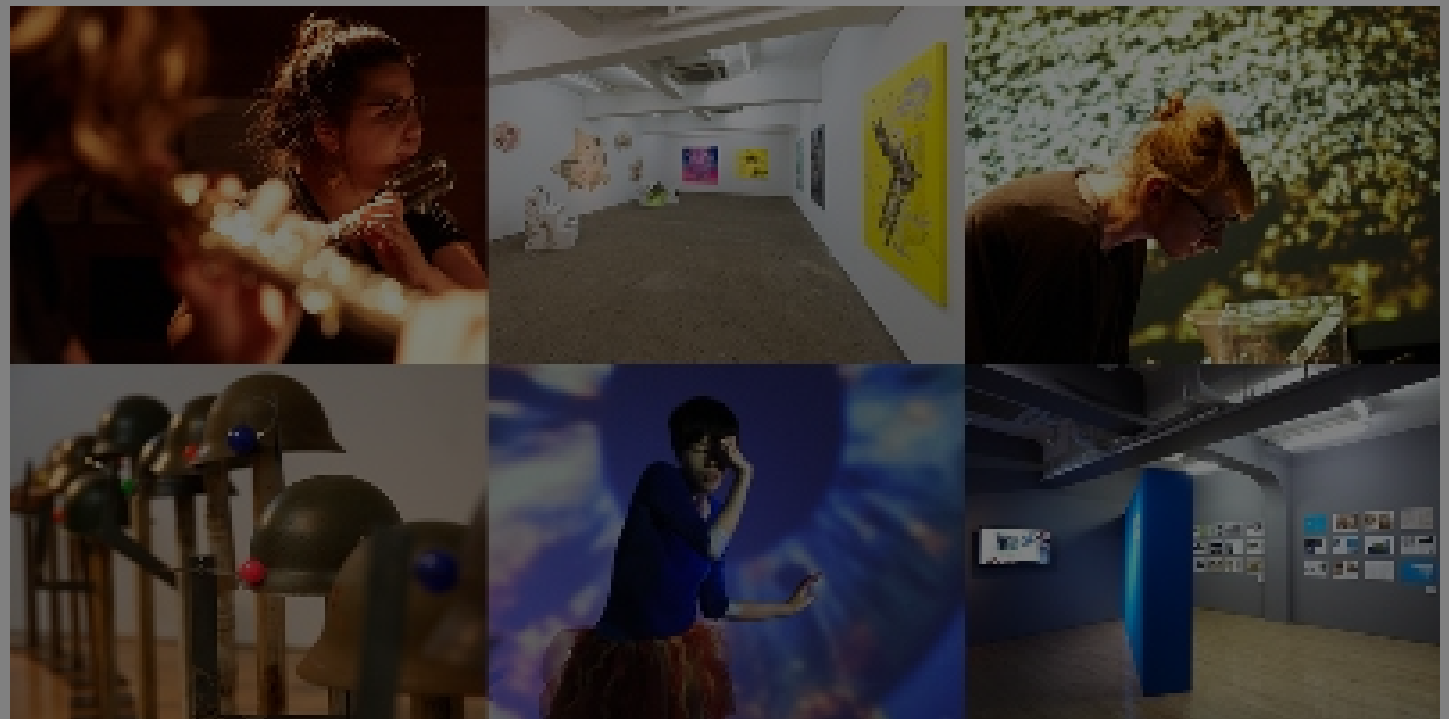
Accept all

WEBSITE
[HTTP://WWW.TOKYO-
WS.ORG/ENGLI...](http://www.tokyo-ws.org/english/)

COUNTRIES
[INTERNATIONAL](#) [JAPAN](#)

DISCIPLINES
[PERFORMING ARTS](#) [VISUAL ARTS](#)

proposals



 Tokyo OS_webbanner

Tokyo Wonder Site (TWS) announces the OPEN SITE open call for original art projects - these can be time-based (e.g. performance) or space-based (exhibition). Projects to be realised between October 2015 and March 2016 at the TWS Hongo space, Tokyo. Residency accommodation is offered to those from overseas as well as other subsidy.

OPEN SITE further develops TWS major open call programs *Tokyo Experimental Festival* and *Emerging Artists Support Program*. For over 10 years, each program has supported cross-genre experimental performances and those who aspire to plan and carry out exhibitions.

OPEN SITE opens the door to accept multiangular activities in creative fields. By this program, TWS will strive to make it to be a new platform for future art and to be a venue for creators from all genres to interact. Its primary theme, "OPEN SITE," represents its charge to work together with others to create a "site". Not only the planning of performance or exhibition, OPEN SITE also supports that of all: screening, lecture, workshop, symposium, presentation of research, etc. TWS expands the support to the successful candidates in this new program: subsidies, providing accommodation for those residing overseas.

This program is classified into 2 categories based on the way of presentation: **Project A** and **Project B**. We covet your plan strongly motivated to present new sensation by making free use of the space at TWS Hongo.

- (1) Any project proposals to be realized in OPEN SITE 2016-2017 which fulfill following two conditions.
- Projects which explores new expression/ art/ culture, and tries to open up to societies.
 - Projects which are well structured and have unique originalities.

(2) Also, a proposal should follow one of the two Project Types below.

*** Project A (Duration Based)**

- Projects that have DURATION OF TIME. (e.g.: music, dance, theater works, films & videos, symposiums, workshops etc.)

by programs, workshops etc.)

*** *Project B (Space Based)***

- Projects that can be realized using an EXHIBITION SPACE. (e.g.: exhibitions of 2D works, 3D works, design, media art, display of research studies etc.)

<<Supports by TWS>>

(1) Providing a space for the project for free of charge.

(2) Providing subsidy

*** *Project A:***

- **100,000JPY** (residents in Japan)
- **200,000JPY** (overseas residents)
- Returning 90% of ticket revenue

*** *Project B:***

- **300,000JPY** (residents in Japan)
- **400,000JPY** (overseas residents)

(3) Providing accommodation in TWS Residency (for overseas residents only)

(4) Assisting a part of PR and management of the project

<<Program Period>> (Provisional)

October 15 (Sat), 2016 - March 26 (Sun), 2017

* Period is divided into four terms.

* Conditions are different depending on Project A or Project B.

* Please refer to Application Outline for more details.

<<Venue>>

Tokyo Wonder Site HONGO

(2-4-16 Hongo, Bunkyo-ku, Tokyo 113-0033 JAPAN)

<<Eligibility>>

Applicants must fulfill all conditions below:

- (1) Be able to take responsibilities for planning, preparations, and executions of projects.
 - (2) Candidates who have passed the second selections must attend the interview in the third selection.
- * The interview can be done by Skype if the candidate lives abroad or in a place far from Tokyo.


APPLICATION DEADLINE: 23 May 2016

[See website](#) for Application packages and full guidelines

Similar content

POSTED ON
15 JUL 2014

Tokyo Wonder Site | residency call for 2015



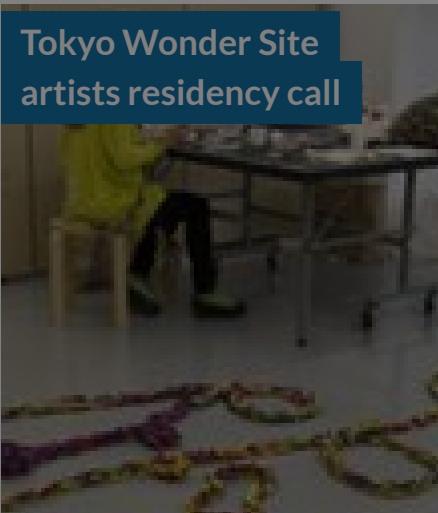
POSTED ON
21 MAY 2010

Japan: international creator residency program



POSTED ON
13 SEP 2010

Tokyo Wonder Site artists residency call



POSTED ON
18 OCT 2011

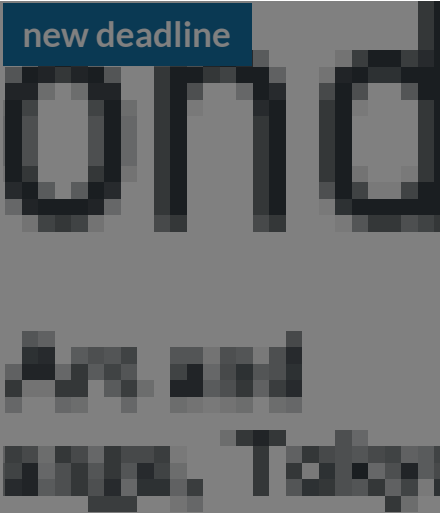
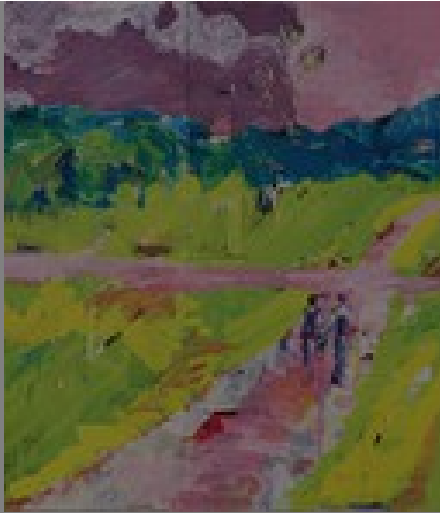
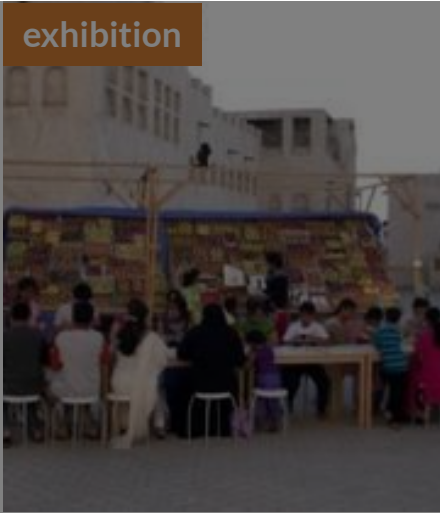
Tokyo | Where do we go from here? | new Asian art centres

POSTED ON
10 JUN 2016

Tokyo Wonder Site residencies calls 2017

POSTED ON
11 OCT 2011

Research Residency Programme 2012 | Tokyo Wonder Site |



ABOUT ASEF CULTURE360

culture360.asef.org brings Asia and Europe closer by providing information, facilitating dialogue and stimulating reflection on the arts and culture of the two regions.

[MORE ABOUT ASEF CULTURE360](#) | [FAQ](#)

