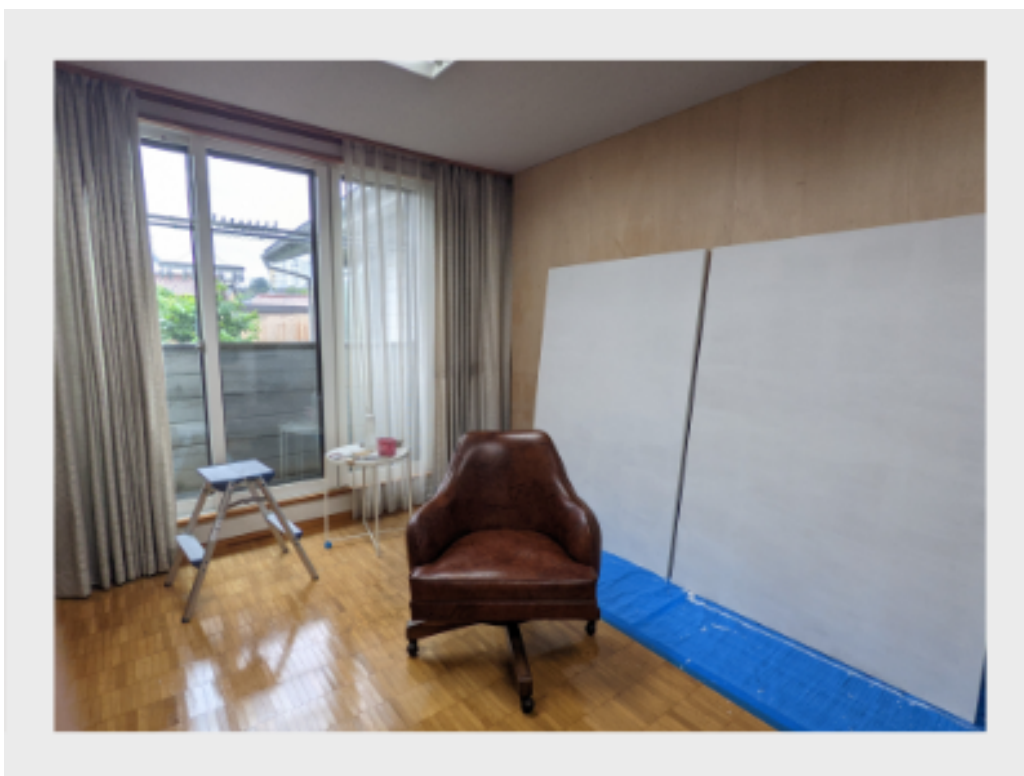


RESOURCES > CORN

POSTED ON
03 MAR 2022

CORN



CORN is an artists residency project in Kanazawa, Japan. The organisation was started in Kanazawa by 3 people who emigrated from Tokyo in 2021. Artist-in-residence programmes are organised as part of Kanazawa's international information dissemination efforts, while supporting the **digitization of local business owners, creating cultural events, and launching partnerships with local companies.**

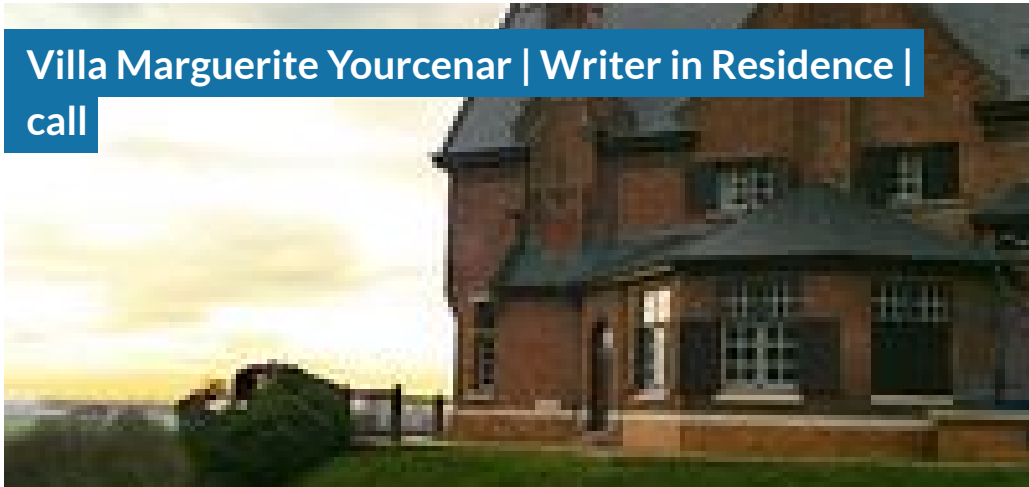
In 2022, 3 types of programmes are announced through open calls. These cover three types of stays: a short stay that you can apply for on a weekly basis, a long stay that you can apply for on a monthly basis, and an ideas-based stay that is selected according to the theme.

CORN artist residency aims to listen to the wishes of artists and provide research on culture, history, crafts, etc. and networking with local artists.

SIMILAR CONTENT

DEADLINE
31 JAN 2012

Villa Marguerite Yourcenar | Writer in Residence | call



RESIDENCIES
EUROPE FRANCE INTERNATIONAL

DEADLINE
01 MAY 2015

D.I.S.C. the Art residency programmes in India - open call for 2015 & 2016



RESIDENCIES
INDIA INTERNATIONAL LITHUANIA

DEADLINE
01 MAR 2020

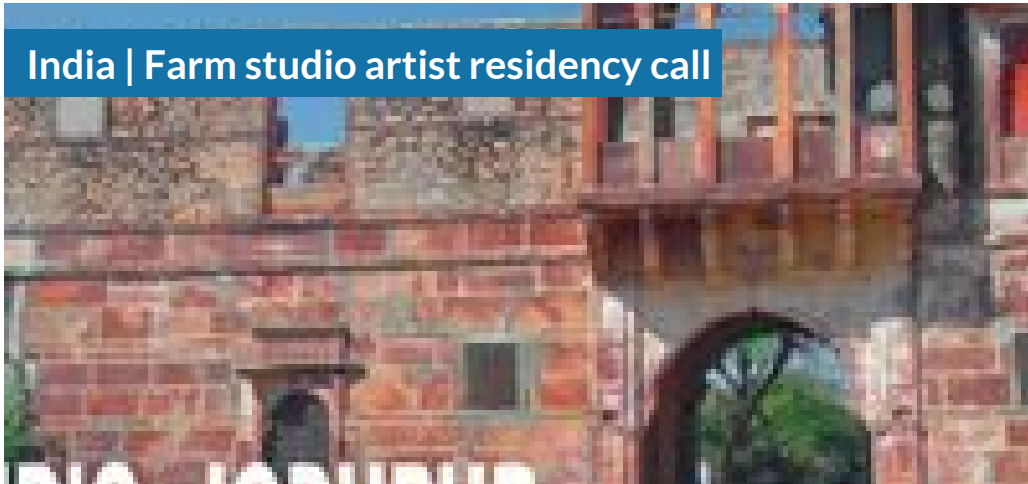
Norway | Lademoen Kunstnerverksteder LKV artist residencies call



RESIDENCIES
INTERNATIONAL NORWAY

DEADLINE
31 DEC 2017

India | Farm studio artist residency call



RESIDENCIES
INDIA INTERNATIONAL

DEADLINE
01 SEP 2019

Vilnius | Arts Printing House international residencies call



DEADLINE
01 OCT 2015

Bergen | Hordaland Kunstsenter residencies



RESIDENCIES
INTERNATIONAL NORWAY

WEBSITE
[HTTPS://CORN.CARGO.SITE/](https://corn.cargo.site/)

COUNTRY
JAPAN

DISCIPLINES
CRAFT LITERATURE PHOTOGRAPHY VISUAL ARTS

ABOUT ASEF CULTURE360

culture360.asef.org brings Asia and Europe closer by providing information, facilitating dialogue and stimulating reflection on the arts and culture of the two regions.

MORE ABOUT ASEF CULTURE360 | [FAQ](#) | [f](#) [X](#) [@](#)



This website was created and maintained with the financial support of the European Union. Its contents are the sole responsibility of the Asia-Europe Foundation (ASEF) and do not necessarily reflect the views of the European Union.

[About us](#)

[Team](#)

[Partners](#)

[FAQ](#)

[Brand guidelines](#)

[How to partner with us](#)

[Contact us](#)

[#ASEFCulture](#)