

RESOURCES > Indonesian Dance Festival

POSTED ON  
03 SEP 2010

## Indonesian Dance Festival



Indonesian Dance Festival (IDF), established in 1992, acts as a laboratory within Indonesia's contemporary dance ecosystem.

The biennial festival provides space for local choreographers to develop their potentials, and facilitate their encounters with global dance figures. IDF has organised over 270 performances, involved over 330

choreographers, and produced 43 commissioned and reconstruction works. As the longest-running festival in Southeast Asia, IDF has collaborated with local and international curators and a wide range of dance communities in different countries. With a vision to make dance as part of daily life, IDF organises a wide range of **festival programmes** that are accessible to the public.

---

## SIMILAR CONTENT

BY NUR ASHIKIN ALI  
13 DEC 2022



INSIGHTS  
INDONESIA

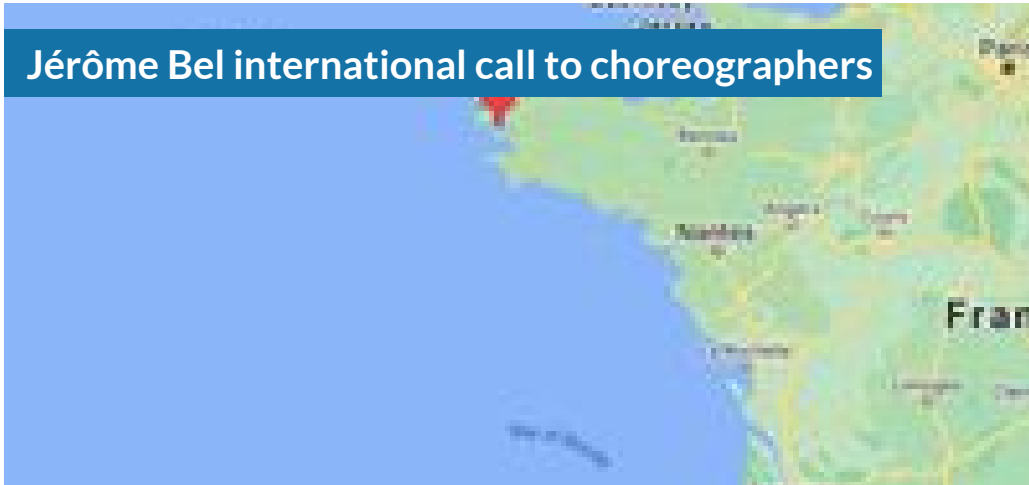
FROM - TO  
22 OCT 2022 - 28 OCT 2022



EVENTS  
INDONESIA

DEADLINE  
31 JUL 2021

## Jérôme Bel international call to choreographers



OPEN CALLS  
FRANCE INTERNATIONAL

POSTED ON  
04 JUL 2011

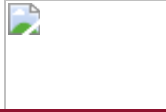
## Dance Centre school of performing arts



ORGANISATIONS DIRECTORY  
THAILAND

POSTED ON  
07 JUN 2010

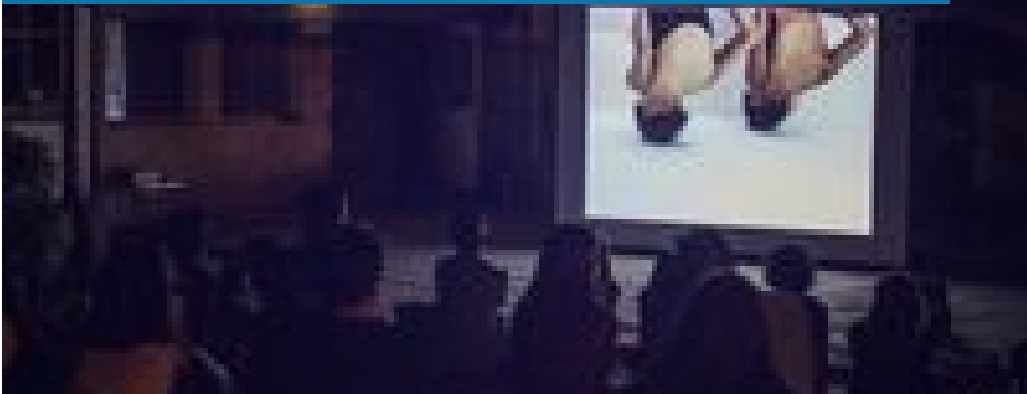
## Indonesia: Creative Producers Initiative Network



#ASEFCulture

DEADLINE  
18 JUN 2022

### Bulgaria | Moving Body Festival calls for dance films



OPEN CALLS  
BULGARIA INTERNATIONAL

WEBSITE  
[HTTPS://INDONESIANDANCEFESTIVAL.ID/EN/](https://indonesiandancefestival.id/en/)

COUNTRY  
INDONESIA

DISCIPLINES  
DANCE FESTIVALS

### ABOUT ASEF CULTURE360

[culture360.asef.org](https://culture360.asef.org) brings Asia and Europe closer by providing information, facilitating dialogue and stimulating reflection on the arts and

culture of the two regions.

**MORE ABOUT ASEF CULTURE360 | [FAQ](#) | [f](#) [X](#) [@](#)**

This website was created and maintained with the financial support of the European Union. Its contents are the sole responsibility of the Asia-Europe Foundation (ASEF) and do not necessarily reflect the views of the European Union.



About us

Team

Partners

FAQ

Brand guidelines

How to partner with us

Contact us

#ASEFCulture