

## Privacy Settings

We use cookies to optimize our website and our service.

- ☒ Functional
- ☒ Statistics
- ☒ Marketing

Save

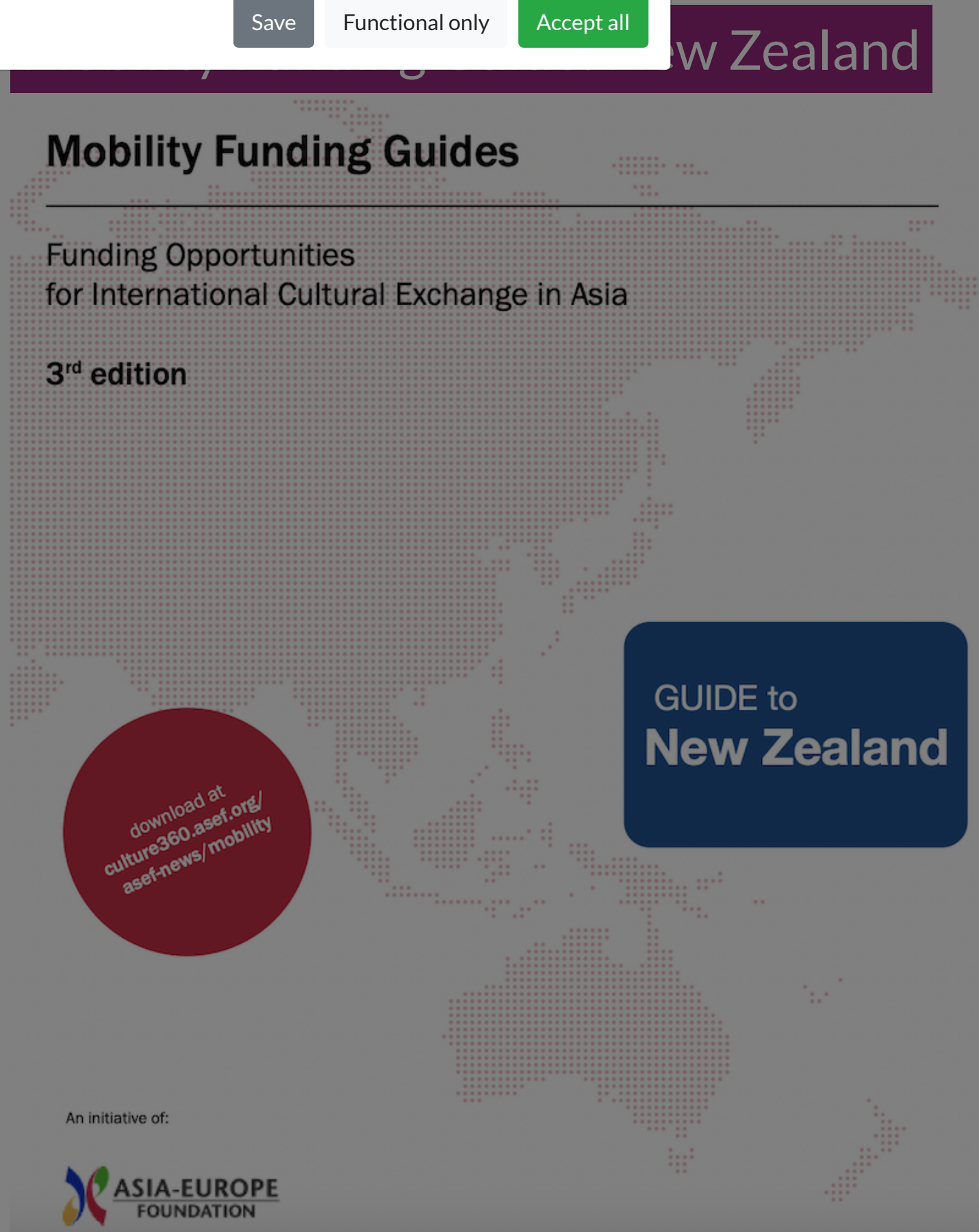
Functional only

Accept all

WEBSITE  
[HTTPS://CULTURE360.ASEF.ORG/M...](https://culture360.asef.org/M...)

COUNTRY  
[NEW ZEALAND](#)

THEMES  
[CULTURAL POLICY](#)  
[CULTURAL RIGHTS](#) [MOBILITY](#)



# Mobility Funding Guides


## Funding Opportunities for International Cultural Exchange in Asia

3<sup>rd</sup> edition

GUIDE to  
**New Zealand**

download at  
[culture360.asef.org/  
asef-news/mobility](https://culture360.asef.org/asef-news/mobility)

An initiative of:



ASIA-EUROPE  
FOUNDATION

The Mobility Funding Guide: Funding Opportunities for International Cultural Exchange in Asia, Guide to New Zealand provides an overview of funding available for cultural project to and from New Zealand.

In this latest edition for New Zealand (July 2014), readers can find funding opportunities by country in most artistic and cultural disciplines.

There are **10 funding organisations listed with 19 funding schemes**. There are an additional **8 sources of funding that have a focus on Asia**. The top 5 types of mobility funded are event participant grants, scholarships/postgraduate training courses, project and production grants, market development grants and artists'/writers' residencies. The top 5 art forms funded are visual arts, performing arts, literature, music and cinema

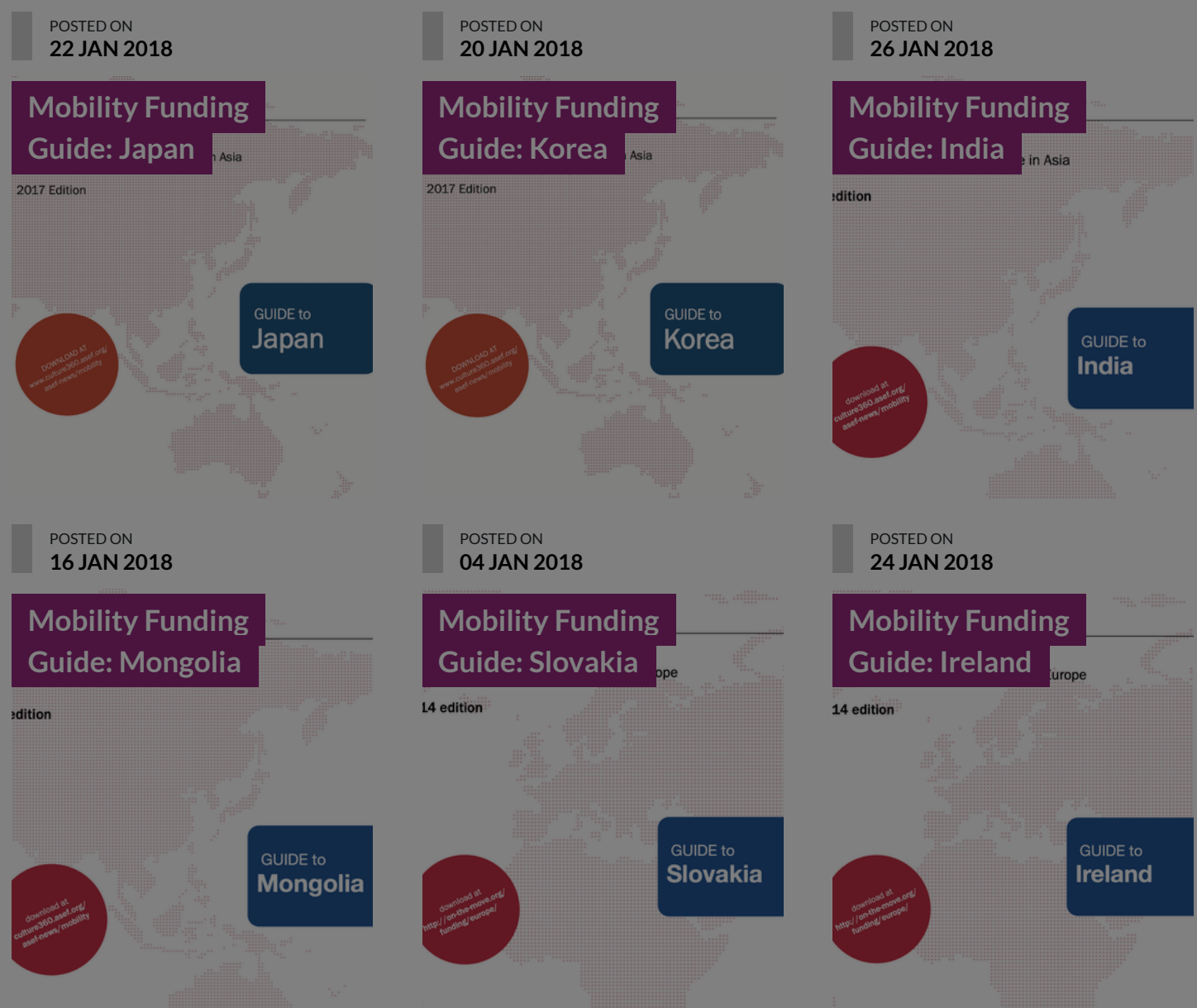
To make sure that the publication uses reliable sources, only regular opportunities accessible online are listed. This means that there are a number of resources that are not listed: funds for which information is only available offline, funds that are not based on open calls, and ad hoc or short-term funding. Additionally, this guide was last updated in 2014, so there might be some changes in the listed opportunities.

The guide is an attempt to gather all the resources in one document and is by no means complete. Rather, it is a starting point for research into funding for mobility in the context of New Zealand. You can learn about [how to read the mobility funding guides here](#).

Since 2012, the [Asia-Europe Foundation](#) (ASEF) and [On the Move](#) (OTM) have jointly presented the Mobility Funding Guides for International Cultural Exchange for the 51 countries of the Asia-Europe Meeting (ASEM).

Download the [guide of New Zealand here](#) and the [regional guide here](#).

## Similar content



## ABOUT ASEF CULTURE360

[culture360.asef.org](http://culture360.asef.org) brings Asia and Europe closer by providing information, facilitating dialogue and stimulating reflection on the arts and culture of the two regions.

[MORE ABOUT ASEF CULTURE360](#) | [FAQ](#)

