

Privacy Settings

We use cookies to optimize our website and our service.

- ☒ Functional
- ☒ Statistics
- ☒ Marketing

Save

Functional only

Accept all

Disability in Europe

Commissioned by



ON
THE
MOVE

Time To Act: Two Years On

**Data-led insights on
Performing Arts &
Disability in Europe**

A research report authored by On the Move, commissioned by the British Council at the conclusion of the Europe Beyond Access project, May 2023



Two years on from the Time to Act report, British Council has commissioned On the Move to conduct a follow-up report looking further into the knowledge gaps in the cultural sector that contribute towards inequalities for disabled artists and audiences.

This report is more important than ever, especially as we recognise the **International Day of Persons with Disabilities on 3 December**.

The report reveals data-led insights into the accessibility, inclusion, international mobility and professional development of disabled artists in the European performing arts sector, as well as the progress made over the past few years. The report combines a regional focus, covering all the countries participating in the Creative Europe programme (as well as Switzerland and the UK), with more detailed analyses of the progress made in three of the countries where Europe Beyond Access has operated, namely Italy, Poland, and Sweden.

Overall, the report shows that progress has been achieved, particularly in the countries where organisations, disabled professionals and policymakers have taken a commitment and actively worked together to foster change. It demonstrates that multi-country, long-term actions lead to change. EU funding has also made a very significant contribution in this respect. However, progress continues to be necessary even where advancements have been made.

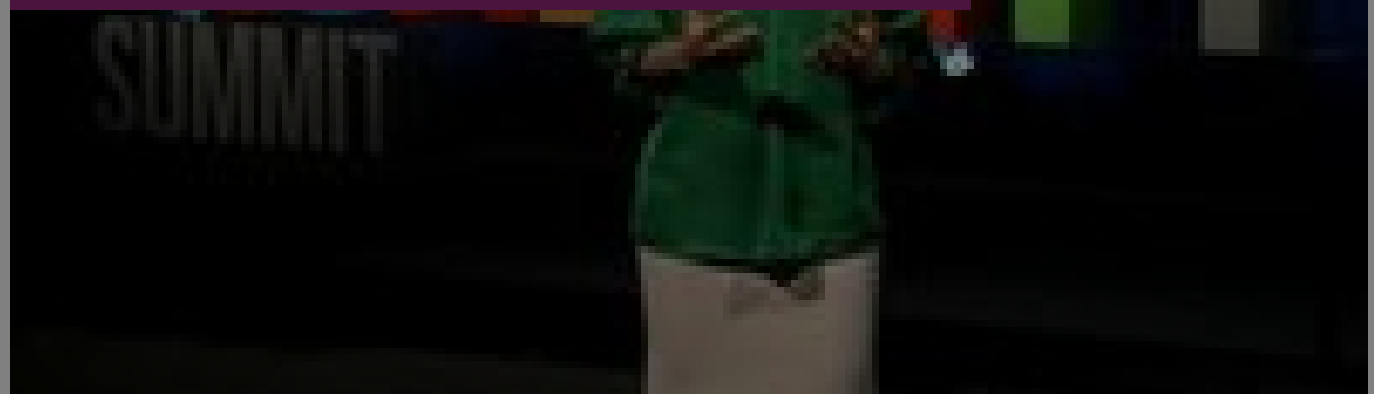
The study is part of the large-scale Arts and Disability project, Europe Beyond Access (which has recently been awarded Creative Europe funding until 2027). Co-funded by the Creative Europe programme of the European Union, this initiative aims to support disabled artists to break the glass ceilings of the contemporary theatre and dance sectors. The core partners of the project are British Council (operating for this project in the UK and Poland), Onassis Stegi (Greece), Holland Dance Festival (The Netherlands), Kampnagel (Germany), Per.Art (Serbia), Skånes Dansteater (Sweden), and Oriente Occidente (Italy).

[Read the full report](#)

SIMILAR CONTENT

POSTED ON
02 DEC 2022

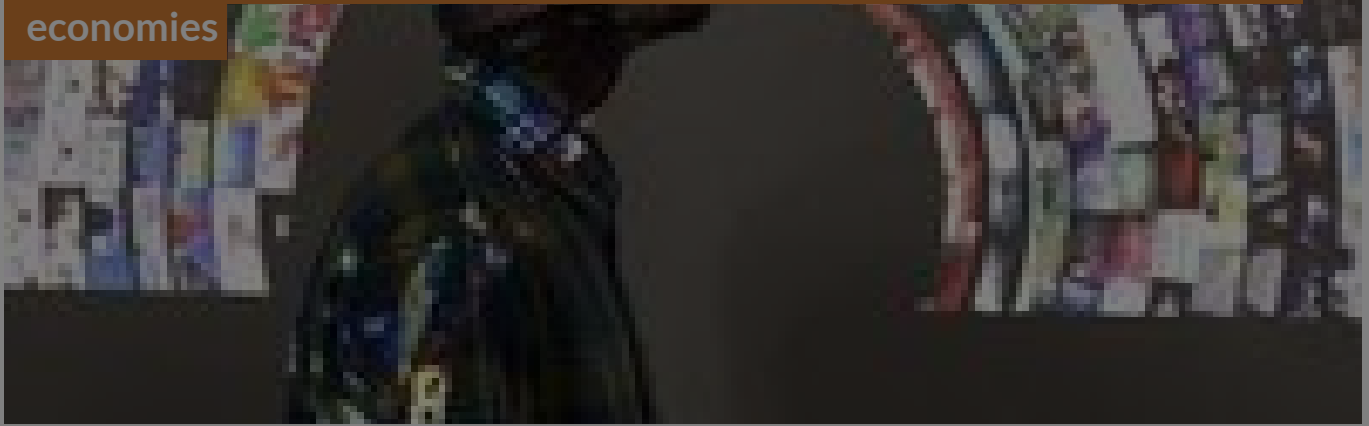
Disability and the arts: Key challenges and resources



PUBLICATIONS
INTERNATIONAL

POSTED ON
22 MAR 2018

British Council launches DICE programme to support emerging creative economies

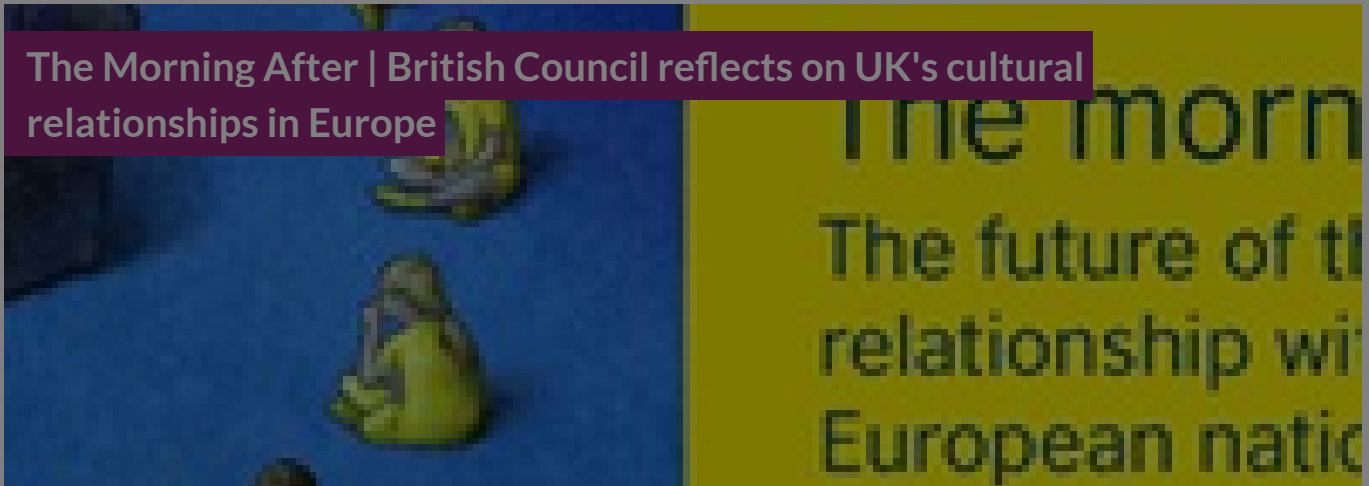


NEWS

INDONESIA INTERNATIONAL PAKISTAN UNITED KINGDOM

POSTED ON
02 JUL 2016

The Morning After | British Council reflects on UK's cultural relationships in Europe



PUBLICATIONS

EUROPE UNITED KINGDOM

POSTED ON
07 SEP 2010

British Council Poland

POSTED ON
26 JUN 2024

UK/Poland Cultural Season 2025: Imagining Future Collaborations Report

the leading cultural
and Polish organisations
culture sector and their role
in the UK/Poland Season
of cooperation and
of the British Council

PUBLICATIONS
POLAND UNITED KINGDOM

DEADLINE
17 NOV 2023

Europe Beyond Access Project Manager job



JOBS
EUROPE SWEDEN

WEBSITE
[HTTPS://WWW.DISABILITYARTSINTERNATIONAL.ORG/RESOURCES/TIME-TO-ACT-TWO-YEARS-ON-DATA-LED-INSIGHTS-ON-PERFORMING-ARTS-AND-DISABILITY-IN-EUROPE/](https://www.disabilityartsinternational.org/resources/time-to-act-two-years-on-data-led-insights-on-performing-arts-and-disability-in-europe/)

COUNTRIES
EUROPE ITALY POLAND SWEDEN

THEMES

[CULTURAL RIGHTS](#) [CULTURE AND DEVELOPMENT](#) [ECONOMY AND SOCIETY](#) [MOBILITY](#)

DISCIPLINE

[PERFORMING ARTS](#)

ABOUT ASEF CULTURE360

[culture360.asef.org](#) brings Asia and Europe closer by providing information, facilitating dialogue and stimulating reflection on the arts and culture of the two regions.

MORE ABOUT ASEF CULTURE360 | [FAQ](#) | [f](#) [X](#) [@](#)

This website was created and maintained with the financial support of the European Union. Its contents are the sole responsibility of the Asia-Europe Foundation (ASEF) and do not necessarily reflect the views of the European Union.



[About us](#)

[Team](#)

[Partners](#)

[FAQ](#)

[Brand guidelines](#)

[How to partner with us](#)

[Contact us](#)

[#ASEFCulture](#)

ASIA-EUROPE FOUNDATION (ASEF) 2017 | [TERMS OF SERVICE & PRIVACY POLICY](#) | [CREATIVE COMMONS
ATTRIBUTION - NON COMMERCIAL SHARE](#)